

RNAV (GPS) RWY 27

APCH CRS	Rwy Idg	10,000
266°	TDZE	4012
	Arprt Elev	4012

AL-6624 (USA)

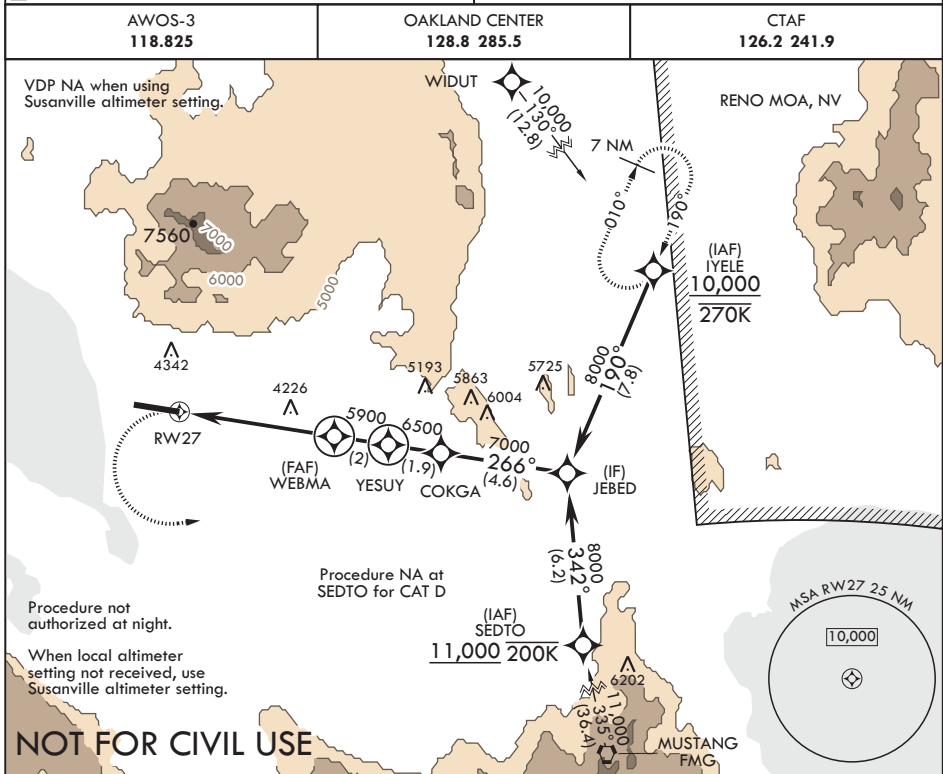
AMEDEE AAF (KAHC)

RNP APCH - GPS.

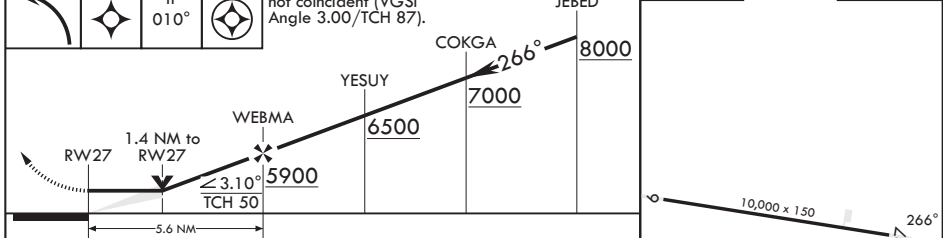
MISSED APPROACH: Climbing left turn to 10,000 direct JEBED and track 010° to IYELE and hold, continue climb-in-hold to 10,000. When authorized by ATC, climb-in-hold to 14,000.

* Circling NA for CAT CD north of Rwy 9-27.

NA



10,000	JEBED	tr	IYELE	VGSJ and descent angles not coincident (VGSJ Angle 3.00/TCH 87).	JEBED	ELEV 4012	TDZE 4012
--------	-------	----	-------	--	-------	-----------	-----------



CATEGORY	A	B	C	D
LNAV MDA	4540-1	528 (600-1)	4540-1½	528 (600-1½)
C CIRCLING	4540-1 528 (600-1)	4680-1 668 (700-1)	4680-1¾ 668 (700-1¾)	4680-2 668 (700-2)
SUSANVILLE ALTIMETER SETTING MINIMUMS				
LNAV MDA	4620-1	608 (700-1)	4620-2	608 (700-2)
C CIRCLING	4620-1 608 (700-1)	4760-1 748 (800-1)	4760-2¼ 748 (800-2¼)	4760-2½ 748 (800-2½)

RNAV (GPS) RWY 27

SW-2, 16 APR 2026 to 14 MAY 2026

SW-2, 16 APR 2026 to 14 MAY 2026