

WAAS CH 72936 W02A	APP CRS 016°	Rwy Idg TDZE Apt Elev	6250 456 458
--	------------------------	-----------------------------	---

RNAV (GPS) RWY 2

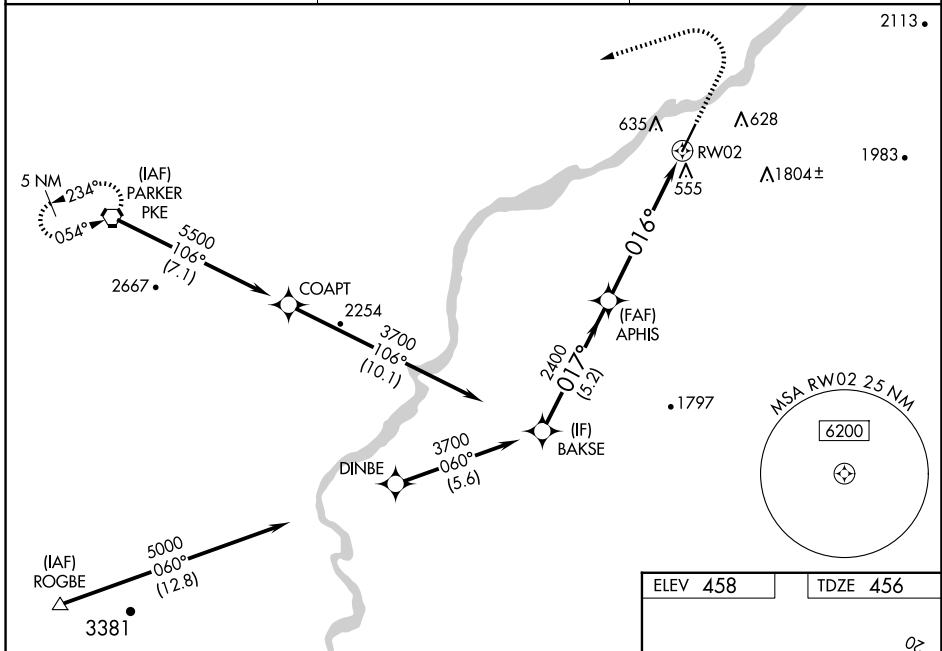
AVI SUQUILLA (P2 \emptyset)

RNP APCH - GPS.

NA For uncompensated Baro-VNAV systems, LNAV/VNAV NA below -15°C or above 54°C. Baro-VNAV and VDP NA when using Blythe altimeter setting. When local altimeter setting not received, use Blythe altimeter setting and increase LPV DA to 804 feet and all visibilities ¼ SM. Increase LNAV/VNAV DA to 1018 feet and all visibilities ¼ SM. Increase all MDAs 100 feet and LNAV visibility Cat B/C ¼ SM, and Circling visibility Cat B ¼ SM.

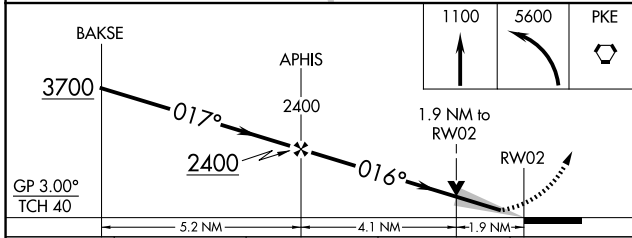
MISSED APPROACH: (Do not exceed 180K until PKE VORTAC) Climb to 1100, then climbing left turn to 5600 direct PKE VORTAC and hold, continue climb-in-hold to 5600.

AWOS-3PT 132.75	LOS ANGELES CENTER 128.15 285.6	UNICOM 122.725 (CTAF) \emptyset
---------------------------	---	--



SW-4, 16 APR 2026 to 14 MAY 2026

SW-4, 16 APR 2026 to 14 MAY 2026



CATEGORY	A	B	C	D
LPV DA		706-¾	250 (300-¾)	NA
LNAV/VNAV DA		920-1⅜	464 (500-1⅜)	NA
LNAV MDA	1100-1	644 (700-1)	1100-3 644 (700-3)	NA
C CIRCLING	1100-1	642 (700-1)	1580-3 1122 (1200-3)	NA

