

APP CRS	Rwy Idg	5000
321°	TDZE	3727
	Apt Elev	3730

RNAV (GPS) RWY 32

HOLYOKE (HEQ)

RNP APCH-GPS.

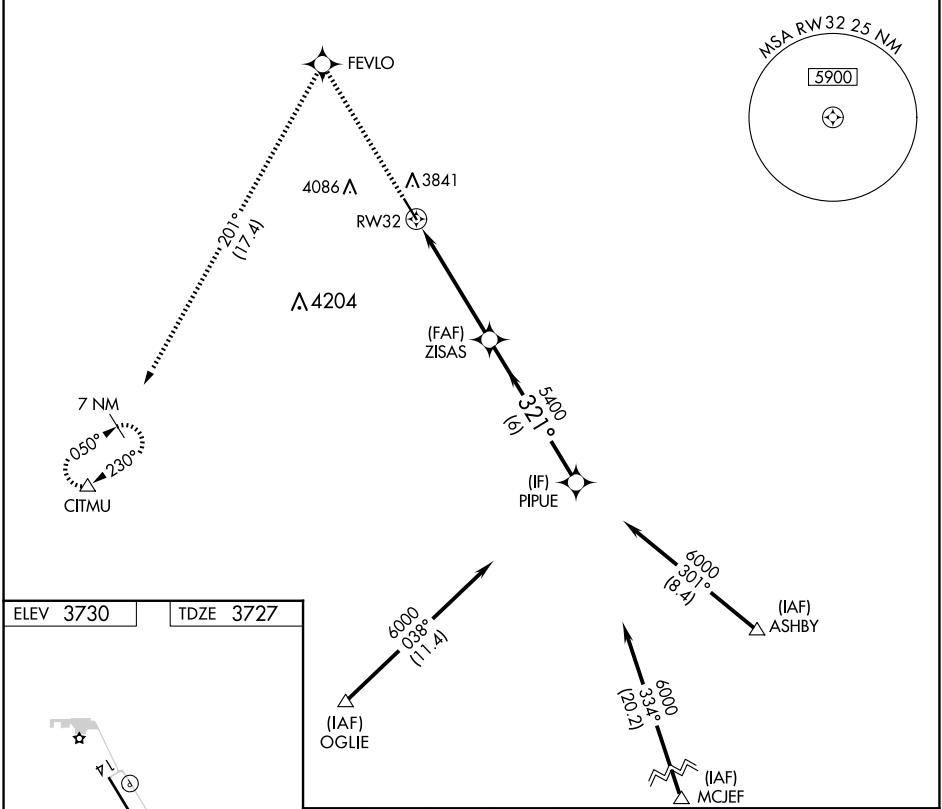
▽ VDP NA when using Sidney Muni/Lloyd W. Carr Fld altimeter setting.
▲ When local altimeter setting not received, use Sidney altimeter setting and increase all MDAs 200 feet and visibility Cat C/D $\frac{3}{8}$ SM. Rwy 32 helicopter visibility reduction below $\frac{3}{4}$ SM NA.

MISSED APPROACH: Climb to 6500 direct FEVLO and on track 201° to CITMU and hold.

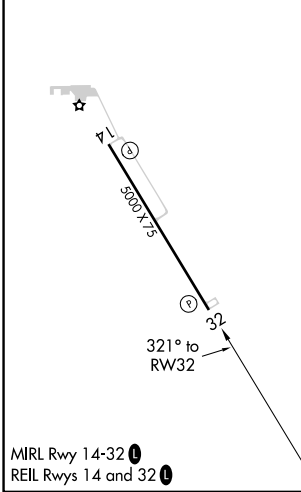
AWOS-3
119.275

DENVER CENTER
118.475 225.4

UNICOM
122.7 (CTAF) 0



ELEV 3730	TDZE 3727
-----------	-----------



6500	FEVLO	tr 201°	CITMU	PIPUE
↑	✧		△	
RW32		0.7 NM to RW32	ZISAS	PIPUE
← 0.7 NM		← 4.4 NM	← 6 NM	
CATEGORY	A	B	C	D
LNAV MDA	4160-1	433 (500-1)		4160-1¼ 433 (500-1¼)

SW-1, 16 APR 2026 to 14 MAY 2026

SW-1, 16 APR 2026 to 14 MAY 2026