

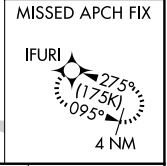
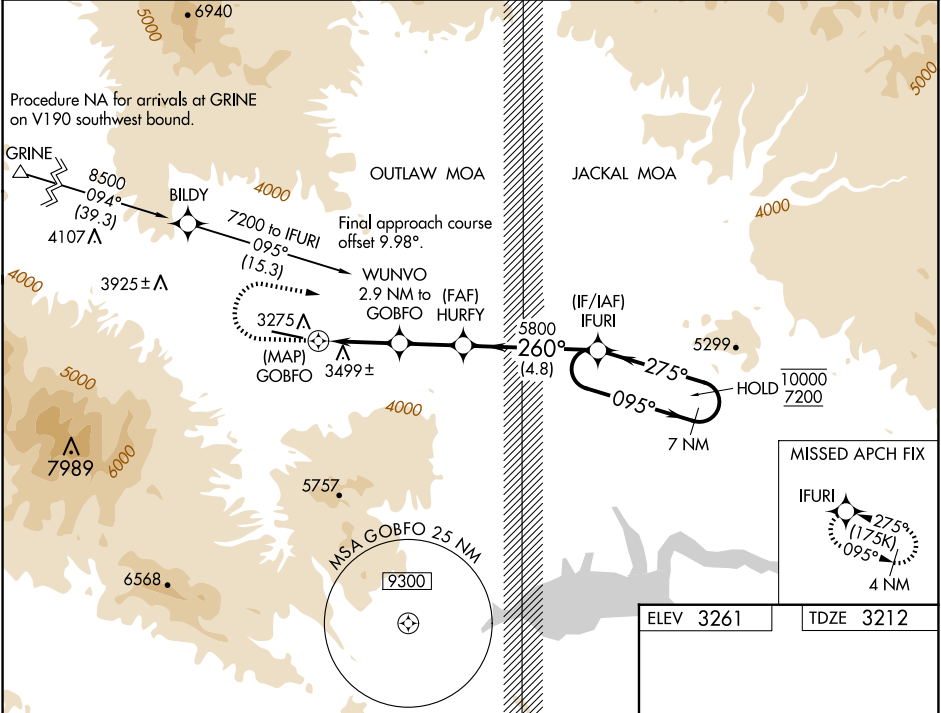
| | | |
|-------------|----------|-------------|
| APP CRS | Rwy Ldg | 6500 |
| 260° | TDZE | 3212 |
| | Apt Elev | 3261 |

RNAV (GPS) RWY 27

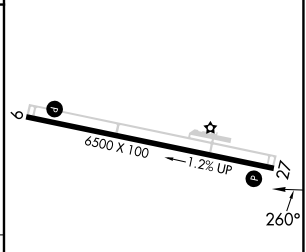
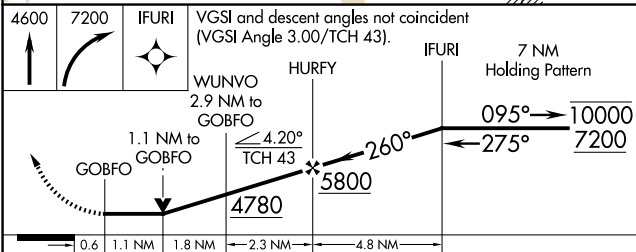
SAN CARLOS APACHE (P13)

| | |
|---|---|
| RNP APCH. | MISSED APPROACH: (Do not exceed 175K until IFURI) Climb to 4600 then climbing right turn to 7200 direct IFURI and hold, do not exceed 230K when continuing climb-in-hold to 7200. |
| <p>▼ Rwy 27 helicopter visibility reduction below 3/4 SM NA.</p> <p>▲ NA VDP NA when using San Manuel altimeter setting. When local altimeter setting not received, use San Manuel altimeter setting and increase all MDA 120 feet.</p> | * Missed approach requires minimum climb of 290 feet per NM to 5340. |

| | | |
|--------------------------|--|---------------------------------|
| AWOS-3 120.075 | ALBUQUERQUE CENTER 125.4 269.3 | UNICOM 122.8 (CTAF) 0 |
|--------------------------|--|---------------------------------|



| | |
|-----------|-----------|
| ELEV 3261 | TDZE 3212 |
|-----------|-----------|



| CATEGORY | A | B | C | D |
|-----------|--------------------------------|--------------------------------|---|----|
| LNAV MDA* | 3760-1 | 548 (500-1) | | NA |
| LNAV MDA | 4180-1 1/4 968 (1000-1 1/4) | 4180-1 1/2 968 (1000-1 1/2) | | NA |
| CIRCLING | 4180-1 1/4 919 (1000-1 1/4) | 4180-1 1/2 919 (1000-1 1/2) | | NA |

MIRL Rwy 9-27 0

REIL Rws 9 and 27

SW-4, 16 APR 2026 to 14 MAY 2026

SW-4, 16 APR 2026 to 14 MAY 2026