

| | | | |
|--|------------------------|-----------------------------|---|
| WAAS CH 86835 W28A | APP CRS 276° | Rwy Ldg TDZE Apt Elev | 3541 851 853 |
|--|------------------------|-----------------------------|---|

RNAV (GPS) RWY 28

NORWALK/HURON COUNTY (5A.1)

RNP APCH.

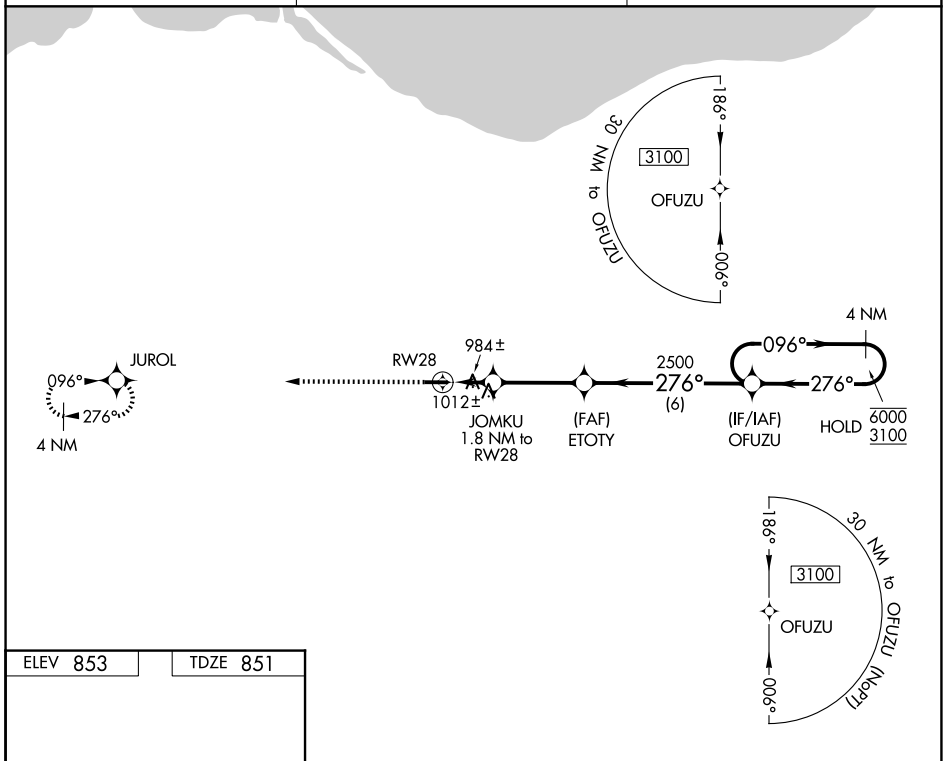
▼ Rwy 28 helicopter visibility reduction below 1 SM NA. Procedure NA at night.
▲ NA Use Cleveland-Hopkins Intl climeter setting.

MISSED APPROACH: Climb to 3000 direct JUROL and hold.

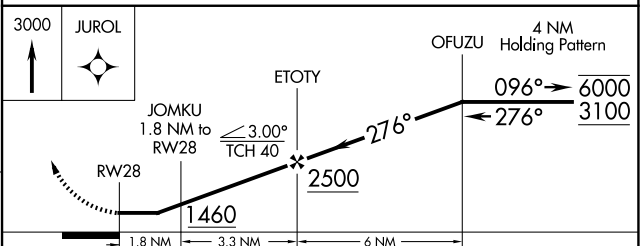
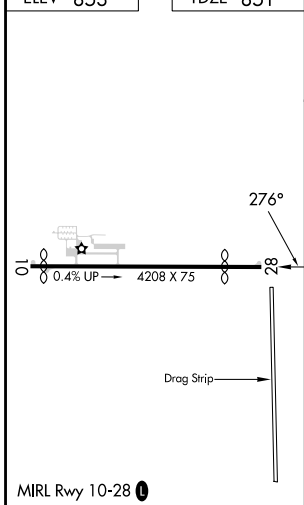
CLE ASOS
127.85

CLEVELAND APP CON ★
128.35 360.65

UNICOM
122.8 (CTAF) 0



ELEV 853 TDZE 851



| CATEGORY | A | B | C | D |
|----------|--------|-------------|--|----|
| LP MDA | 1320-1 | 469 (500-1) | 1320-1 $\frac{3}{8}$ 469 (500-1 $\frac{3}{8}$) | NA |
| LNAV MDA | 1360-1 | 509 (600-1) | 1360-1 $\frac{3}{8}$ 509 (600-1 $\frac{3}{8}$) | NA |
| CIRCLING | 1420-1 | 567 (600-1) | 1440-1 $\frac{1}{2}$ 587 (600-1 $\frac{1}{2}$) | NA |