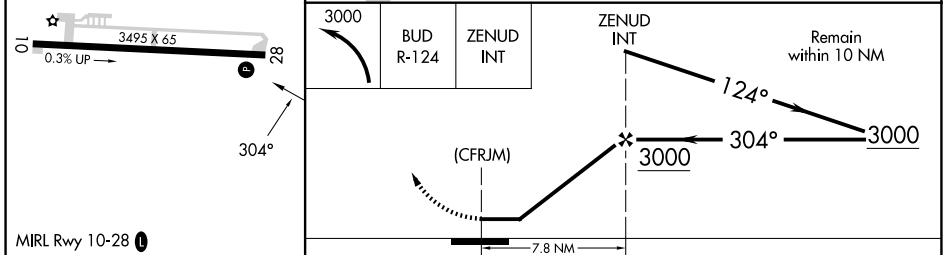
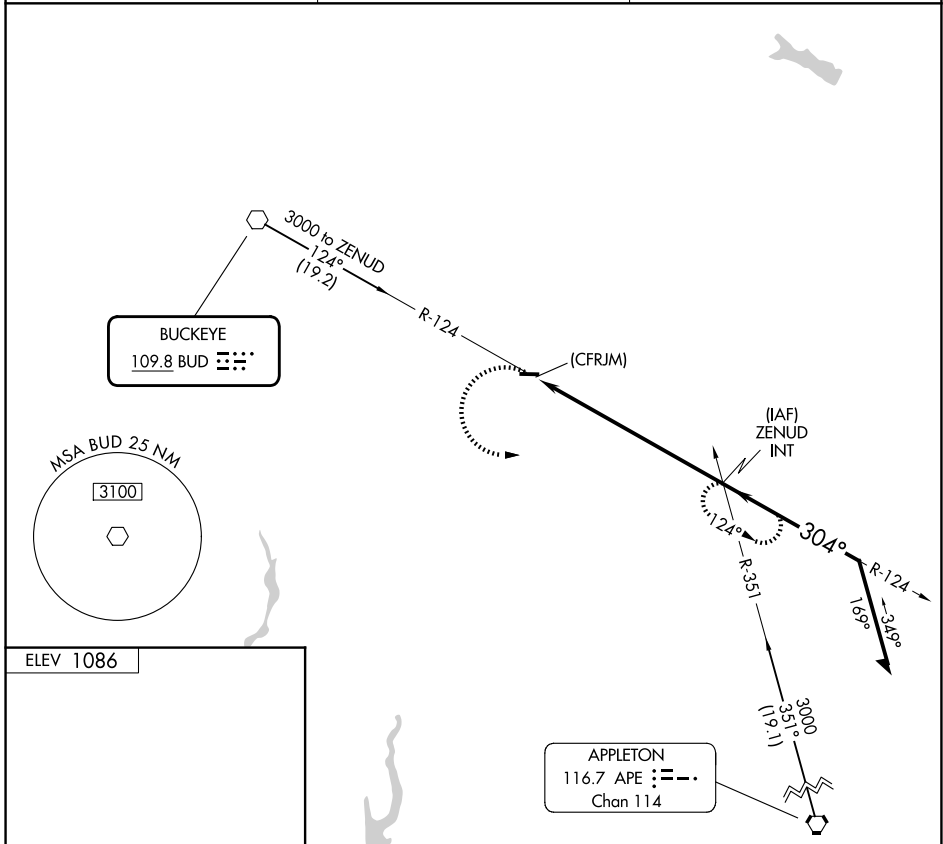


VOR BUD 109.8	APP CRS 304°	Rwy Ldg TDZE Apt Elev	N/A N/A 1086
-------------------------	------------------------	-----------------------------	---

VOR-A
MORROW COUNTY (4I9)

<p>▼ Circling Rwy 28 NA at night. Rwy 28 helicopter visibility reduction below 1 SM NA. Use Marion altimeter setting, when not received use Mansfield altimeter setting and increase all MDA 60 feet and all visibilities ¼ SM.</p> <p>▲ NA</p>	<p>MISSED APPROACH: Climbing left turn to 3000 on BUD VOR R-124 to ZENUD INT and hold.</p>
---	--

AWOS-3PT 121.4	COLUMBUS APP CON 125.95 317.775	UNICOM 122.8 (CTAF) 0
--------------------------	---	---------------------------------



FAF to MAP 7.8 NM						
Knots	60	90	120	150	180	
Min:Sec	7:48	5:12	3:54	3:07	2:36	
CATEGORY	A		B		C	D
CIRCLING	1880-1		794 (800-1)		1940-2½ 854 (900-2½)	NA

EC-2, 16 APR 2026 to 14 MAY 2026

EC-2, 16 APR 2026 to 14 MAY 2026