

APP CRS	Rwy Ldg	3998
028°	TDZE	268
	Apt Elev	270

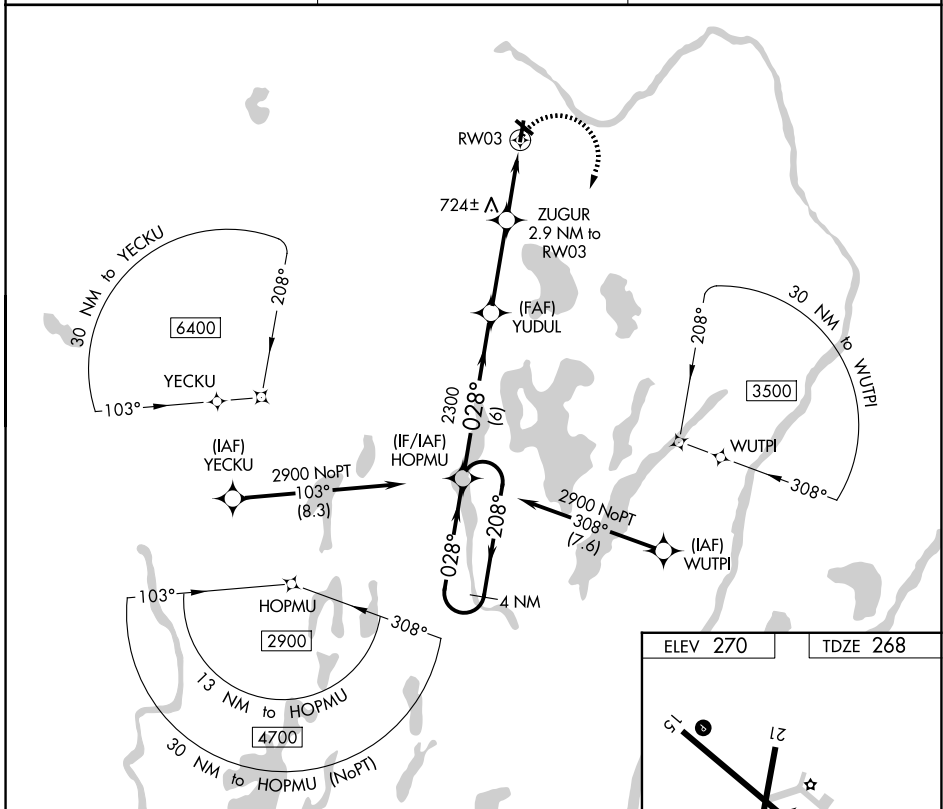
RNAV (GPS) RWY 3

CENTRAL MAINE/NORRIDGEWOCK (OWK)

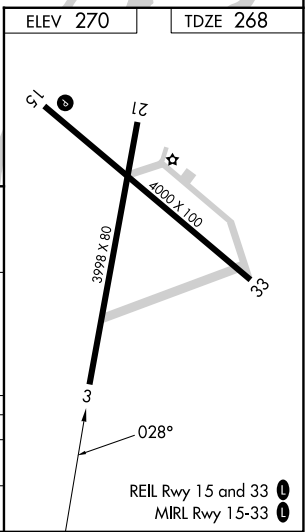
▼ DME/DME RNP-0.3 NA. When local altimeter setting not received, use Augusta State altimeter setting and increase all MDA 80 feet; increase LNAV Cat B visibility ¼ mile and Cat C visibility ½ mile and Circling Cat B visibility ¼ mile and Cat C visibility ½ mile.
▲ NA Procedure NA at night. Helicopter visibility reduction below 1 SM NA.

MISSED APPROACH: Climbing right turn to 2900 direct HOPMU and hold.

AWOS-AV 123.075	PORTLAND APP CON ★ 128.35 299.2	UNICOM 122.8 (CTAF) 0
----------------------------------	--	--



4 NM Holding Pattern	HOPMU	Visual Segment - Obstacles.	2900	HOPMU
2900 ← 208°	← 208°	028°	2300	1220
			6 NM	3.4 NM
				2.9 NM
CATEGORY	A	B	C	D
LNAV MDA	980-1	712 (800-1)	980-2 712 (800-2)	NA
CIRCLING	980-1	710 (800-1)	1080-2 ¼ 810 (900-2 ¼)	NA



NE-1, 16 APR 2026 to 14 MAY 2026

NE-1, 16 APR 2026 to 14 MAY 2026

REIL Rwy 15 and 33 0
MIRL Rwy 15-33 0