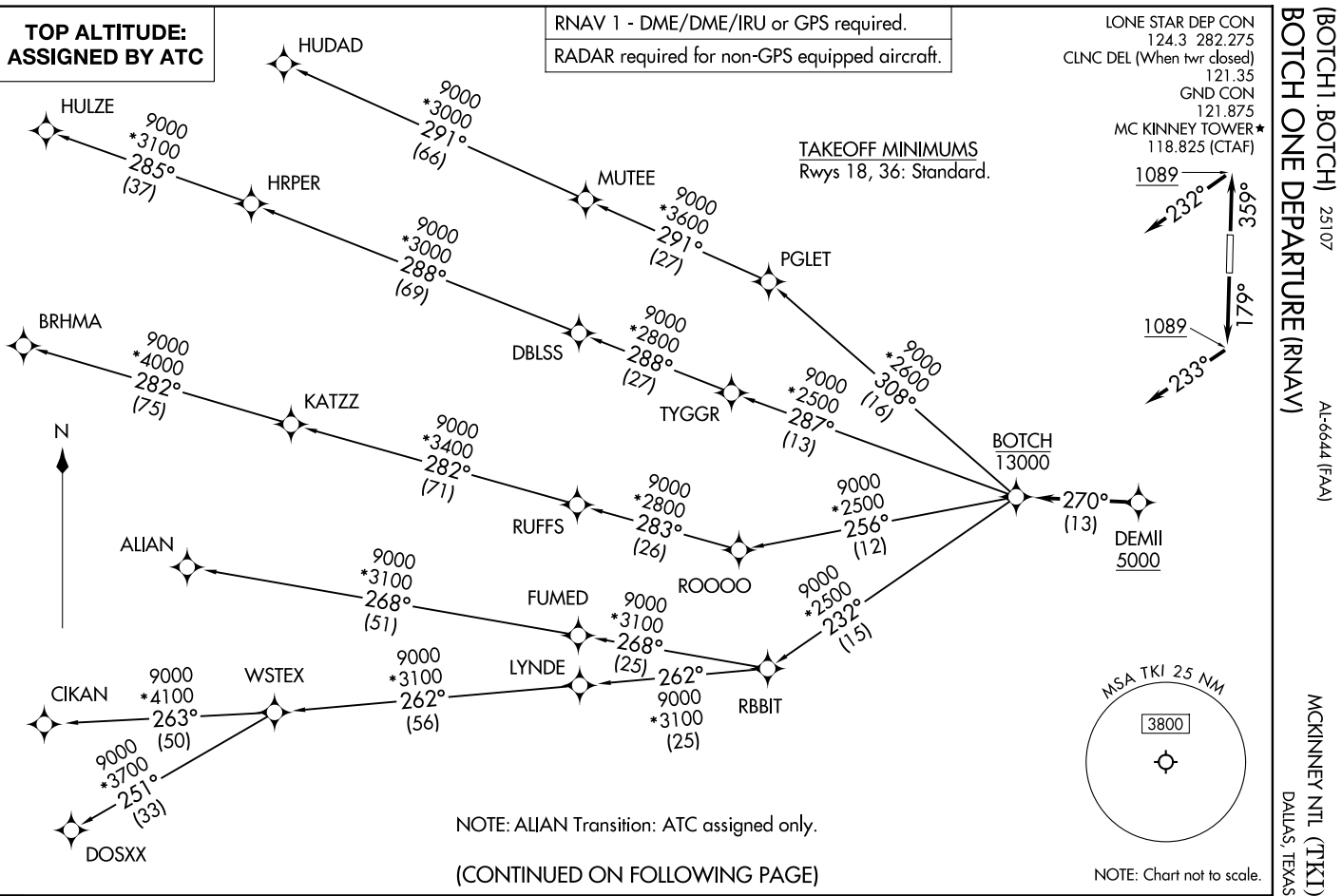
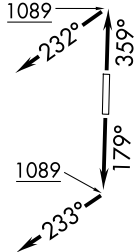


RNAV 1 - DME/DME/IRU or GPS required.
RADAR required for non-GPS equipped aircraft.

LONE STAR DEP CON
124.3 282.275
CLNC DEL (When twr closed)
121.35
GND CON
121.875
MC KINNEY TOWER*
118.825 (CTAF)

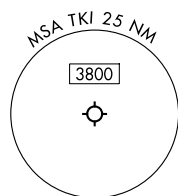
**TOP ALTITUDE:
ASSIGNED BY ATC**

TAKEOFF MINIMUMS
Rwys 18, 36: Standard.



NOTE: ALIAN Transition: ATC assigned only.

(CONTINUED ON FOLLOWING PAGE)



NOTE: Chart not to scale.

BOTCH ONE DEPARTURE (RNAV)
(BOTCH1 .BOTCH) 17APR25

DALLAS, TEXAS
MCKINNEY NTL (TKI)

(BOTCH1 .BOTCH) 25107
BOTCH ONE DEPARTURE (RNAV)

AL6644 (FAA)
MCKINNEY NTL (TKI)
DALLAS, TEXAS

BOTCH ONE DEPARTURE (RNAV)



DEPARTURE ROUTE DESCRIPTION

TAKEOFF RUNWAY 18: Climb on heading 179° to 1089, then on heading 233° or as assigned by ATC, for vectors to cross DEMII at or above 5000, thence. . .

TAKEOFF RUNWAY 36: Climb on heading 359° to 1089, then on heading 232° or as assigned by ATC, for vectors to cross DEMII at or above 5000, thence. . .

. . . on track 270° to cross BOTCH at or below 13000, then on (transition). Maintain ATC assigned altitude, expect filed altitude 10 minutes after departure.

ALIAN TRANSITION (BOTCH1.ALIAN)

BRHMA TRANSITION (BOTCH1.BRHMA)

CIKAN TRANSITION (BOTCH1.CIKAN)

DOSXX TRANSITION (BOTCH1.DOSXX)

HUDAD TRANSITION (BOTCH1.HUDAD)

HULZE TRANSITION (BOTCH1.HULZE)

WSTEX TRANSITION (BOTCH1.WSTEX)

SC-2, 16 APR 2026 to 14 MAY 2026

SC-2, 16 APR 2026 to 14 MAY 2026