

DALLAS FOUR DEPARTURE (DALL4.TTT) 27NOV25
DALLAS, TEXAS
MCKINNEY NTL (TKX)

LONE STAR DEP CON
124.3 282.275
CLINC DEL (When twr closed)
121.35
GND CON
121.875
MC KINNEY TOWER *
118.825 (CTAF)

RADAR and DME required.

TAKEOFF MINIMUMS
Rwys 18, 36: Standard.

TOP ALTITUDE:
ASSIGNED BY ATC

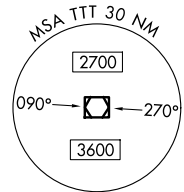
BONHAM
114.6 BYP
Chan 93

MAVERICK
113.1 TTT
Chan 78

GREGG COUNTY
112.9 GGG
Chan 76

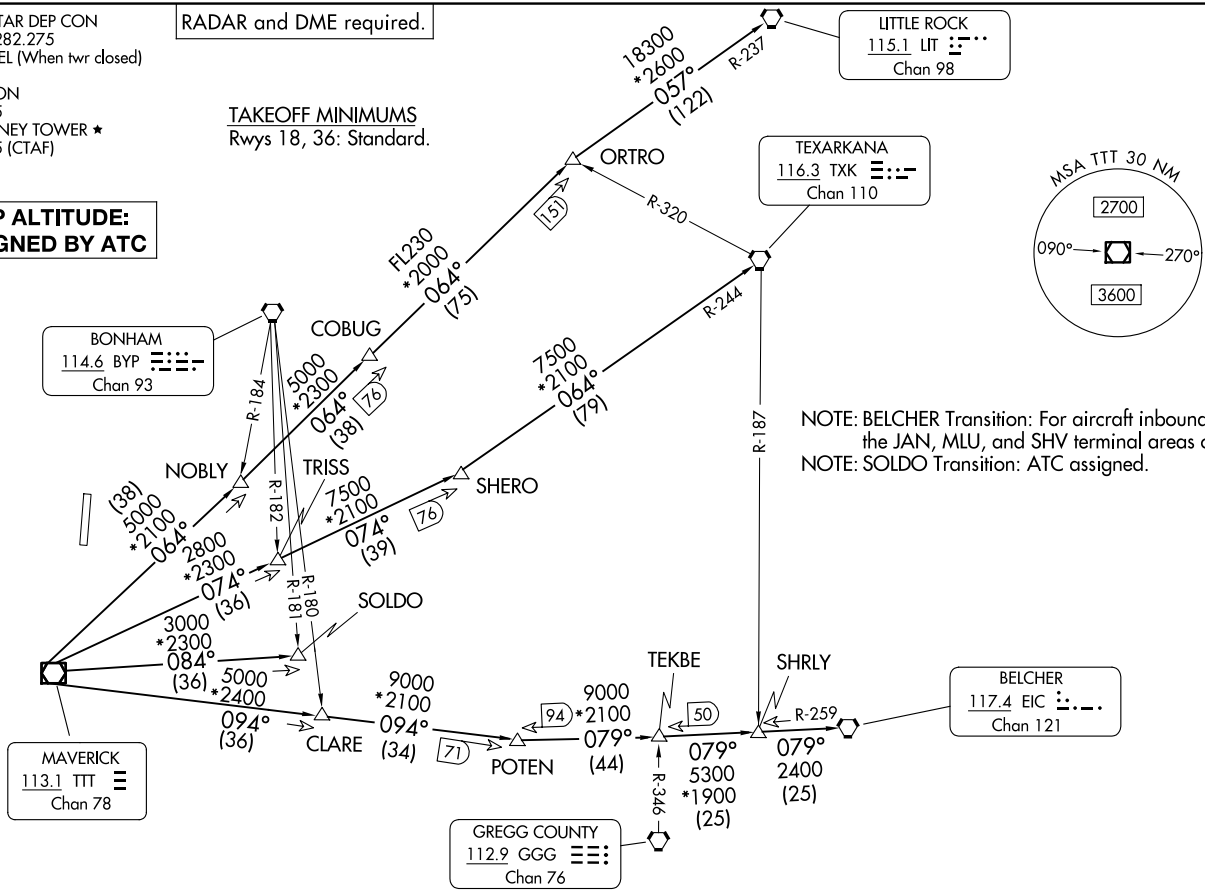
LITTLE ROCK
115.1 LIT
Chan 98

TEXARKANA
116.3 TXK
Chan 110



NOTE: BELCHER Transition: For aircraft inbound to the JAN, MLU, and SHV terminal areas only.
NOTE: SOLDO Transition: ATC assigned.

BELCHER
117.4 EIC
Chan 121



(CONTINUED ON FOLLOWING PAGE)

NOTE: Chart not to scale.

(DALL4.TTT) 25331
DALLAS FOUR DEPARTURE
AL-6644 (FAA)
MCKINNEY NTL (TKX)
DALLAS, TEXAS

DALLAS FOUR DEPARTURE

DALLAS, TEXAS



DEPARTURE ROUTE DESCRIPTION

Fly assigned heading for RADAR vectors to appropriate route. Maintain ATC assigned altitude.

BELCHER TRANSITION (DALL4.EIC): From over TTT VOR/DME on TTT R-094 to POTEN, then on EIC R-259 to EIC VORTAC.

LITTLE ROCK TRANSITION (DALL4.LIT): From over TTT VOR/DME on TTT R-064 to ORTRO, then on LIT R-237 to LIT VORTAC.

SOLDO TRANSITION (DALL4.SOLDO): From over TTT VOR/DME on TTT R-084 to SOLDO.

TEXARKANA TRANSITION (DALL4.TXK): From over TTT VOR/DME on TTT R-074 to SHERO, then on TXK R-244 to TXK VORTAC.

SC-2, 16 APR 2026 to 14 MAY 2026

SC-2, 16 APR 2026 to 14 MAY 2026