

WAAS CH 90326 W34A	APP CRS 344°	Rwy Idg TDZE Apt Elev	3502 1279 1279
--	------------------------	-----------------------------	---

RNAV (GPS) RWY 34

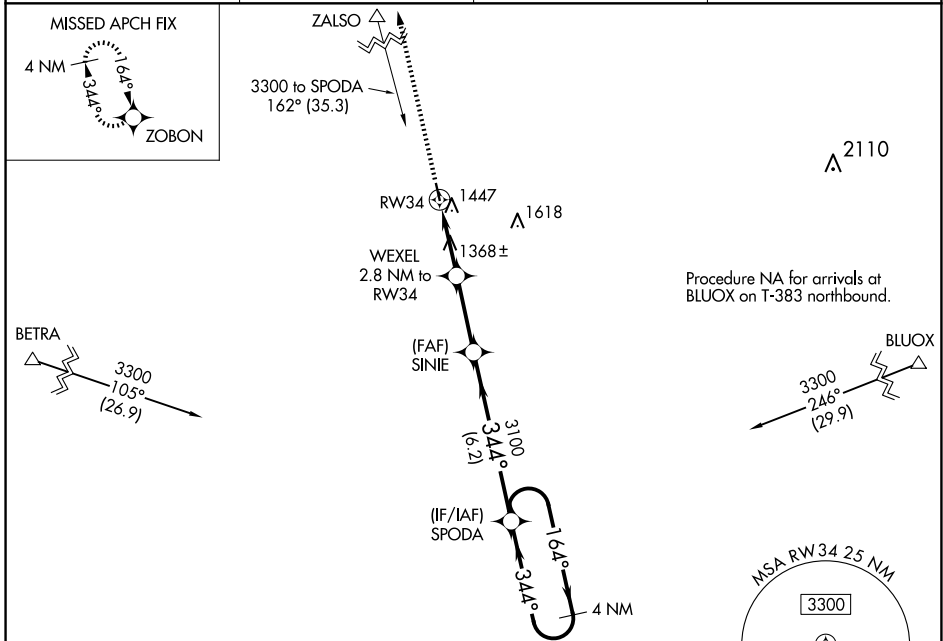
FOSSTON MUNI/ANDERSON FLD (F'S'E)

RNP APCH

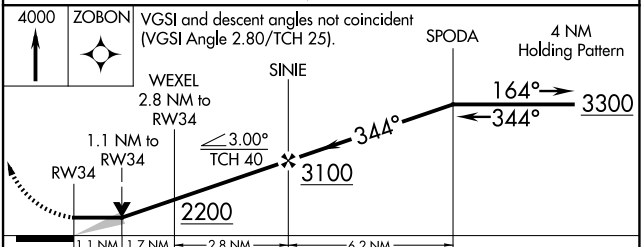
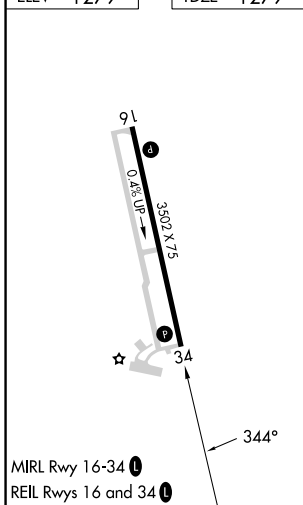
▼ **VDP NA** when using Thief River Falls altimeter setting. When local altimeter setting not received, use Thief River Falls altimeter setting and increase all MDA 100 feet and increase LP and LNAV Cat C visibility $\frac{3}{8}$ SM, and increase Circling Cat C visibility $\frac{1}{2}$ SM.

⚠ **MISSED APPROACH:** Climb to 4000 direct ZOBON and hold.

AWOS-3 118.35	MINNEAPOLIS CENTER 134.75 251.1	GCO 121.725	CTAF 122.9
-------------------------	---	-----------------------	----------------------



ELEV 1279	TDZE 1279
-----------	-----------



CATEGORY	A	B	C	D
LP MDA	1620-1 341 (400-1)			NA
LNAV MDA	1760-1	481 (500-1)	1760- $1\frac{3}{8}$ 481 (500- $1\frac{3}{8}$)	NA
CIRCLING	1860-1	581 (600-1)	1860- $1\frac{1}{2}$ 581 (600- $1\frac{1}{2}$)	NA

NC-1, 16 APR 2026 to 14 MAY 2026

NC-1, 16 APR 2026 to 14 MAY 2026