

SW-4, 16 APR 2026 to 14 MAY 2026

ATIS  
126.5

CLNC DEL  
123.9

GND CON  
121.8

DEER VALLEY TOWER\*

118.4 (Rwy 7R-25L)

120.2 (Rwy 7L-25R)

PHOENIX DEP CON

120.7 239.0

NOTE: RNAV 1.

NOTE: Turbojets and turboprops only.

NOTE: RADAR required.

NOTE: GPS required.

NOTE: ABQ transition ATC assigned only.

NOTE: Aircraft filing over ACH, IBL, ONM, CNX, PNH, MMB, TCC, IRW and TXO file FTHLS DEPARTURE.

NOTE: Aircraft filing over ABQ, CIM, FTI, and GCK file LALUZ DEPARTURE.

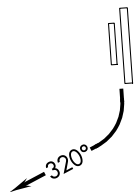
NOTE: Aircraft filing over DEN, RSK, ALS, and points north of ALS file YOTES DEPARTURE.

NOTE: Aircraft departing KGEU and KGYR ATC assigned only.

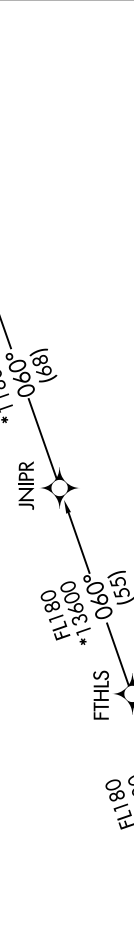
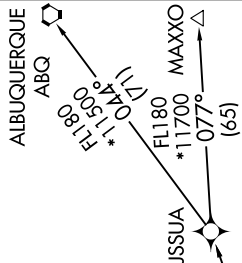
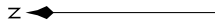
TAKEOFF MINIMUMS

Rwys 7L/R: NA-Obstacles.

Rwys 25L/R: Standard with minimum climb of 370' per NM to 4600.



**TOP ALTITUDE:  
ASSIGNED BY ATC**



**DEPARTURE ROUTE DESCRIPTION**

TAKEOFF RUNWAYS 25L/R: Climbing right turn heading 320° or as assigned by ATC, thence . . .

. . . expect RADAR vectors to BROAK, then on track 059° to FTHLS, then on (transition). Maintain ATC assigned altitude, expect filed altitude 3 minutes after departure.

ALBUQUERQUE TRANSITION (FTHLS6.ABQ)

JNIPR TRANSITION (FTHLS6.JNIPR)

MAXXO TRANSITION (FTHLS6.MAXXO)

NOTE: Chart not to scale.

SW-4, 16 APR 2026 to 14 MAY 2026