

# IZZO EIGHT DEPARTURE (RNAV)

AL-6646 (FAA)

PHOENIX DEER VALLEY (DVT)  
PHOENIX, ARIZONA

SW-4, 16 APR 2026 to 14 MAY 2026

### TOP ALTITUDE: ASSIGNED BY ATC

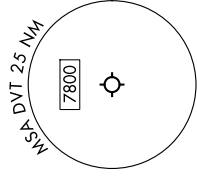
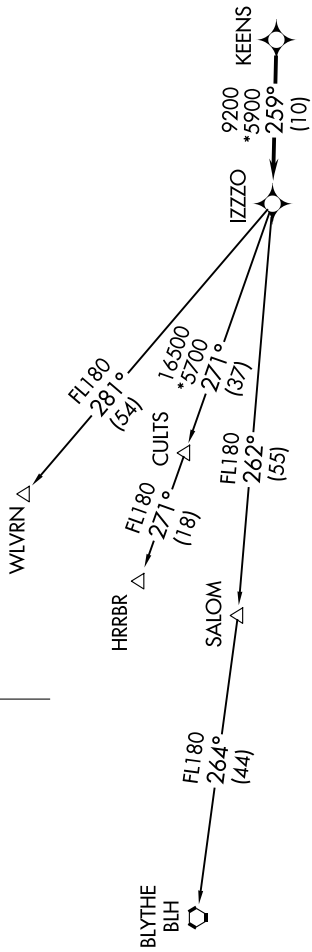
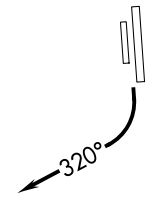
PHOENIX DEP CON  
120.7 239.0  
ATIS  
126.5  
CLINC DEL  
123.9  
GND CON  
121.8  
DEER VALLEY TOWER\*  
118.4 (Rwy 7R-25)  
120.2 (Rwy 7L-25R)

RNAV 1 - GPS.  
RADAR required.

- NOTE: Turbojets and turboprops only.
- NOTE: Aircraft requesting FL220 and below must file BLYTHE Transition.
- NOTE: Turbojets landing LAX, file WLVRN Transition.
- NOTE: Aircraft landing other than LAX and turboprops landing at LAX: Requesting FL240 and above, file HRRBR Transition.
- NOTE: Aircraft departing KGEU and KGYR ATC assigned only.

### TAKEOFF MINIMUMS

Rwys 7L/R: NA - Obstacles.  
Rwys 25L/R: Standard with minimum climb of 370'/NM to 4600.



NOTE: Chart not to scale.

### DEPARTURE ROUTE DESCRIPTION

TAKEOFF RUNWAYS 25L/R: Climbing right turn heading 320° or as assigned by ATC, thence...  
 ...for RADAR vectors to KEENS, then on track 259° to IZZO, then on (transition).  
 Maintain ATC assigned altitude, expect filed altitude 3 minutes after departure.

- BLYTHE TRANSITION (IZZO8.BLH)
- HRRBR TRANSITION (IZZO8.HRRBR)
- WLVRN TRANSITION (IZZO8.WLVRN)

SW-4, 16 APR 2026 to 14 MAY 2026

# IZZO EIGHT DEPARTURE (RNAV)