

(MAYSA7.MAYSA) 20142

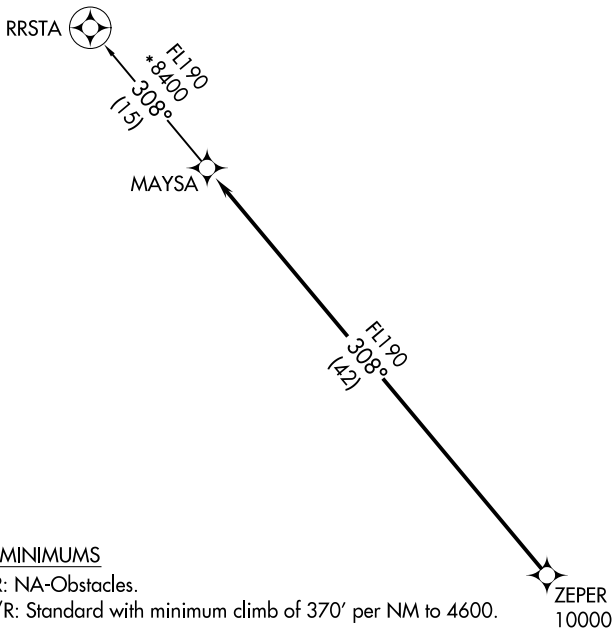
MAYSA SEVEN DEPARTURE (RNAV)

AL-6646 (FAA)

PHOENIX DEER VALLEY (DVT)
PHOENIX, ARIZONA

**TOP ALTITUDE:
ASSIGNED BY ATC**

ATIS	126.5
CLNC DEL	123.9
GND CON	121.8
DEER VALLEY TOWER*	118.4 (Rwy 7R-25L)
	120.2 (Rwy 7L-25R)
PHOENIX DEP CON	120.7 239.0



TAKEOFF MINIMUMS

Rwys 7L/R: NA-Obstacles.

Rwys 25L/R: Standard with minimum climb of 370' per NM to 4600.

NOTE: RNAV 1.

NOTE: Turbojets and turboprops only.

NOTE: RADAR required.

NOTE: GPS required.

NOTE: Aircraft departing KGEU and KGYR ATC assigned only.

Do not file.

NOTE: Chart not to scale.



DEPARTURE ROUTE DESCRIPTION

TAKEOFF RUNWAYS 25L/R: Climbing right turn heading 320° or as assigned by ATC, thence. . . .

. . . .expect RADAR vectors to cross ZEPER at or above 10000, then on track 308° to MAYSA, then on RRSTA TRANSITION. Maintain ATC assigned altitude, expect filed altitude 3 minutes after departure.

RRSTA TRANSITION (MAYSA7.RRSTA)

MAYSA SEVEN DEPARTURE (RNAV)

(MAYSA7.MAYSA) 21MAY20

PHOENIX, ARIZONA
PHOENIX DEER VALLEY (DVT)

SW-4, 16 APR 2026 to 14 MAY 2026

SW-4, 16 APR 2026 to 14 MAY 2026