

APP CRS	Rwy Ldg	N/A
254°	TDZE	N/A
	Apt Elev	1478

RNAV (GPS)-B

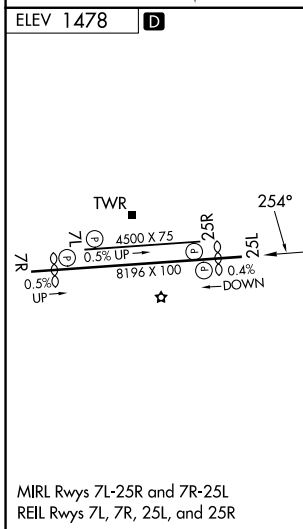
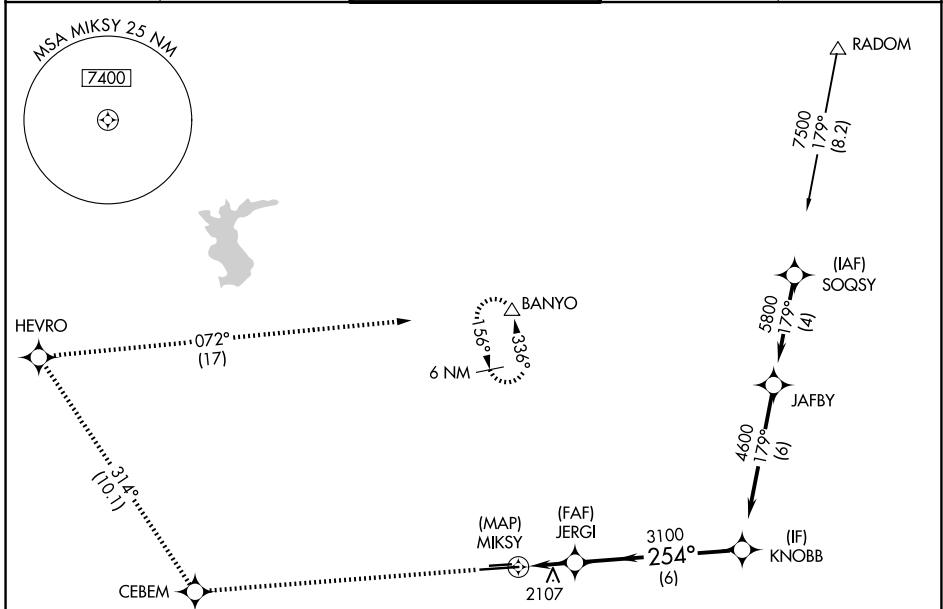
PHOENIX DEER VALLEY (DVT)

RNP APCH - GPS.

⚠ When VGSI inop, Circling to Rwy 25R NA at night. Circling not authorized at night north of Rwy 7R-25L. When local altimeter setting not received, use Scottsdale altimeter setting and increase all MDAs 40 feet and Circling Cat B visibility ¼ SM.

MISSED APPROACH: Climb to 6000 direct CEBEM and on track 314° to HEVRO and right turn on track 072° to BANYO and hold.

ATIS 126.5	PHOENIX APP CON 120.7 239.0	DEER VALLEY TOWER* 118.4 (070°-250°) (CTAF) 120.2 (251°-069°)	GND CON 121.8	UNICOM 122.95
----------------------	---------------------------------------	---	-------------------------	-------------------------



	6000	CEBEM	tr 314°	HEVRO	tr 072°	BANYO	4600	KNOBB
				JERGI				Procedure Turn NA
				MIKSY	≤ 6.80° TCH 40		3100	
CATEGORY	A	B	C	D				
CIRCLING	2400-1¼ 922 (1000-1¼)	2420-1¼ 942 (1000-1¼)	2580-3 1102 (1200-3)	NA				

SW-4, 16 APR 2026 to 14 MAY 2026

SW-4, 16 APR 2026 to 14 MAY 2026