

WAAS CH 42839 W03A	APP CRS 030°	Rwy Ldg 8500 TDZE 954 Apt Elev 969
--	------------------------	---

RNAV (GPS) RWY 3

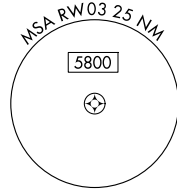
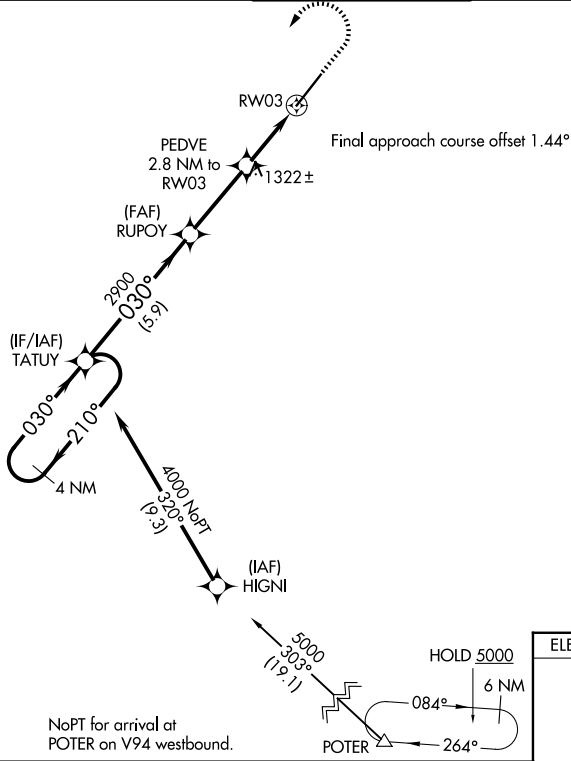
PHOENIX GOODYEAR (GYR)

RNP APCH

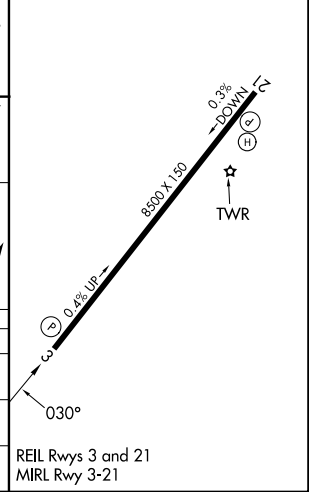
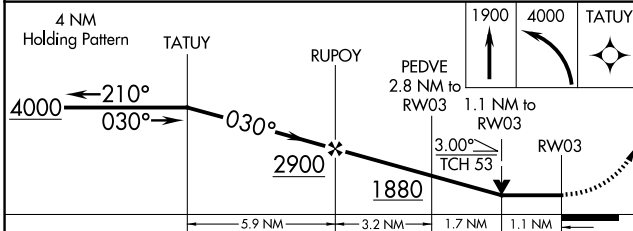
NA Procedure NA at night. Helicopter visibility reduction below 3/4 SM NA. VDP NA when using Phoenix Sky Harbor Intl altimeter setting. When local altimeter setting not received, use Phoenix Sky Harbor Intl altimeter setting; increase all MDA 80 feet and visibility LP/LNAV Cat C/D and Circling Cat C 1/4 SM.

MISSED APPROACH: Climb to 1900 then climbing left turn to 4000 direct TATUY and hold.

ATIS 118.35	LUKE APP CON ★ 125.45 263.125	GOODYEAR TOWER ★ 120.1 (CTAF) 239.3	GND CON 121.7	UNICOM 122.95
-----------------------	---	---	-------------------------	-------------------------



ELEV 969	TDZE 954
-----------------	-----------------



CATEGORY	A	B	C	D
LP MDA	1340-1 386 (400-1)		1340-1 3/8 386 (400-1 1/8)	
LNAV MDA	1580-1 626 (700-1)		1580-1 3/4 626 (700-1 3/4)	
CIRCLING	1580-1 611 (700-1)		1860-2 3/4 891 (900-2 3/4)	1920-3 951 (1000-3)

REIL Rwy 3 and 21
MIRL Rwy 3-21

SW-4, 16 APR 2026 to 14 MAY 2026

SW-4, 16 APR 2026 to 14 MAY 2026