

(YOTES6.YOTES) 18144

YOTES SIX DEPARTURE (RNAV)

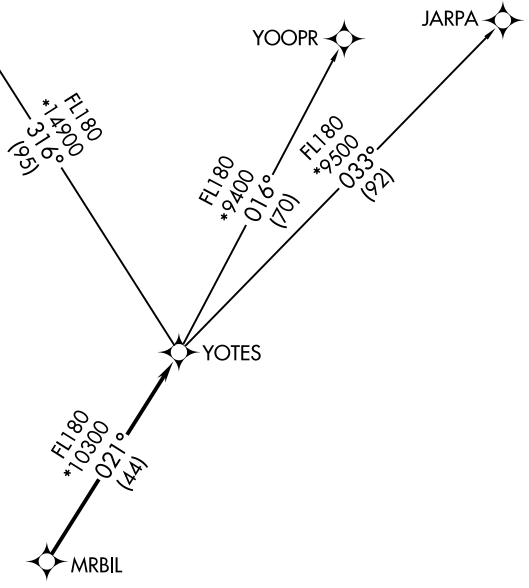
AL-6648 (FAA)

PHOENIX GOODYEAR (G·Y·R)
GOODYEAR, ARIZONA

ATIS
118.35
GND CON
121.7
GOODYEAR TOWER ★
120.1 239.3
LUKE DEP CON★
125.45 263.125
PHOENIX DEP CON
120.7 239.0

GRAND CANYON
GCN

**TOP ALTITUDE:
ASSIGNED BY ATC**



- NOTE: RNAV 1.
- NOTE: Turbopets and turboprops only.
- NOTE: RADAR required.
- NOTE: GPS required.
- NOTE: GCN TRANSITION ATC assigned only.
- NOTE: Aircraft departing KGEU and KGYR ATC assigned only.

TAKEOFF MINIMUMS
Rwys 3, 21: Standard.

NOTE: Chart not to scale.

DEPARTURE ROUTE DESCRIPTION

TAKEOFF RUNWAY 3: Climb heading 028° or as assigned by ATC, thence. . . .

TAKEOFF RUNWAY 21: Climb heading 228° or as assigned by ATC, thence. . . .

. . . .expect RADAR vectors to MRBIL, then on track 021° to YOTES, then on (transition).
Maintain ATC assigned altitude, expect filed altitude 3 minutes after departure.

GRAND CANYON TRANSITION (YOTES6.GCN)

JARPA TRANSITION (YOTES6.JARPA)

YOOPR TRANSITION (YOTES6.YOOPR)

YOTES SIX DEPARTURE (RNAV)
(YOTES6.YOTES) 24MAY18

GOODYEAR, ARIZONA
PHOENIX GOODYEAR (G·Y·R)

SW-4, 16 APR 2026 to 14 MAY 2026

SW-4, 16 APR 2026 to 14 MAY 2026