

ANTLERS, OKLAHOMA

AL-6650 (FAA)

25219

WAAS CH 78247 W18A	APP CRS 178°	Rwy Ldg TDZE Apt Elev	4001 577 577
--	------------------------	-----------------------------	---

RNAV (GPS) RWY 18

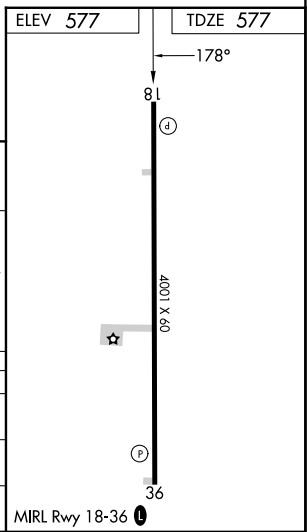
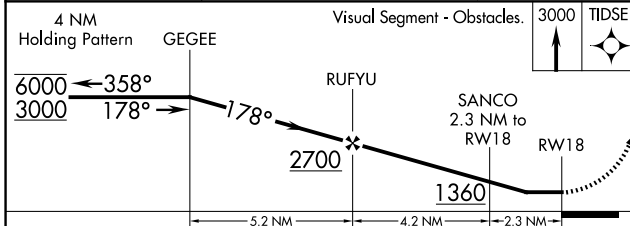
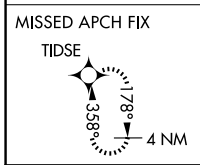
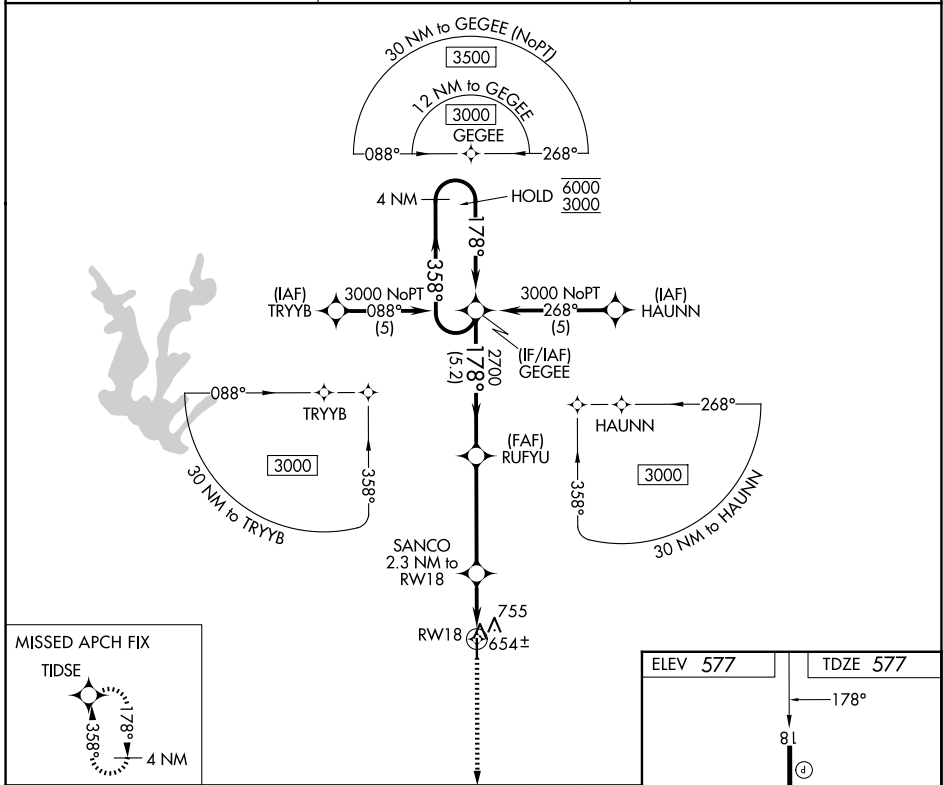
ANTLERS MUNI (80F)

RNP APCH - GPS.

NA Use PRX altimeter setting; when not received, use DUA altimeter setting and increase all MDAs 40 feet. Rwy 18 helicopter visibility reduction below 1 SM NA. Straight-in and Circling Rwy 18 NA at night.

MISSED APPROACH: Climb to 3000 direct TIDSE and hold.

PRX AWOS-3PT 119.675	FORT WORTH CENTER 124.875 370.95	CTAF 122.9
--------------------------------	--	----------------------



CATEGORY	A	B	C	D
LP MDA	1000-1	423 (500-1)	NA	
LNAV MDA	1060-1	483 (500-1)	NA	
CIRCLING	1140-1	563 (600-1)	NA	

ANTLERS, OKLAHOMA
Orig 07AUG25

34°12'N-95°39'W

RNAV (GPS) RWY 18

ANTLERS MUNI (80F)

SC-1, 16 APR 2026 to 14 MAY 2026

SC-1, 16 APR 2026 to 14 MAY 2026