

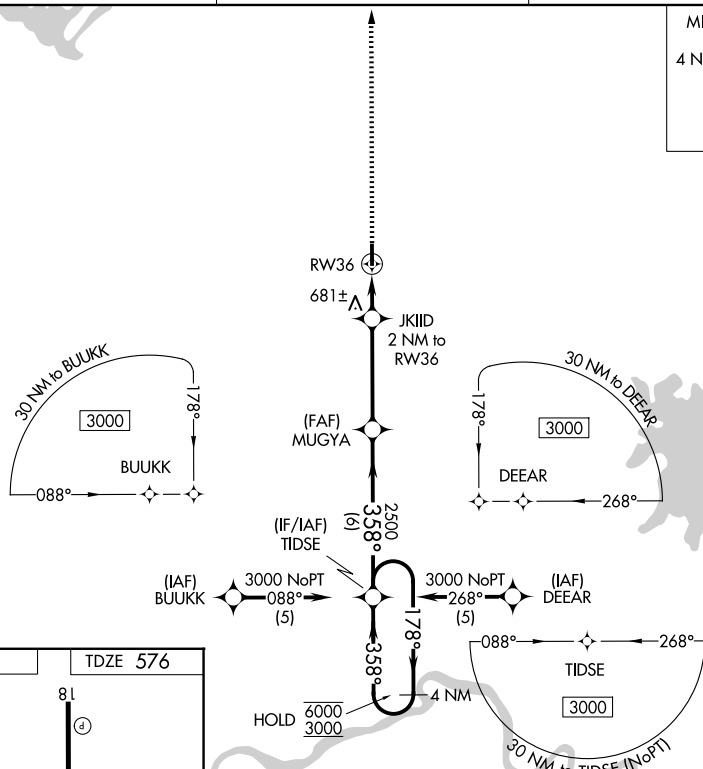
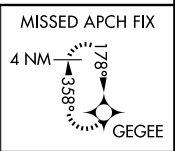
WAAS CH <b>70428</b> <b>W36A</b>	APP CRS <b>358°</b>	Rwy Ldg TDZE Apt Elev	<b>4001</b> <b>576</b> <b>577</b>
--	------------------------	-----------------------------	---

# RNAV (GPS) RWY 36

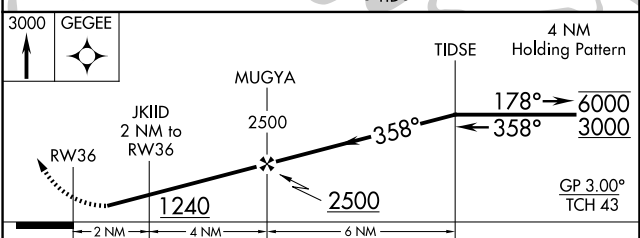
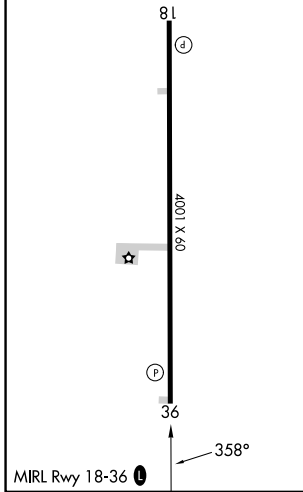
ANTLERS MUNI (80F)

RNP APCH - GPS.	Baro-VNAV NA. Circling Rwy 18 NA at night. Rwy 36 helicopter visibility reduction below 3/4 SM NA. Use PRX altimeter setting; when not received, use DUA altimeter setting; increase LPV and LNAV/VNAV DA to 937 feet; increase all MDAs 40 feet.	MISSED APPROACH: Climb to 3000 direct GEGEE and hold.
-----------------	---	---

PRX AWOS-3PT <b>119.675</b>	FORT WORTH CENTER <b>124.875 370.95</b>	CTAF <b>122.9 0</b>
--------------------------------	--	------------------------



ELEV 577	TDZE 576
----------	----------



CATEGORY	A	B	C	D
LPV DA	911-1	335 (400-1)		NA
LNAV/VNAV DA	911-1	335 (400-1)		NA
LNAV MDA	1020-1	444 (500-1)		NA
CIRCLING	1140-1	563 (600-1)		NA

SC-1, 16 APR 2026 to 14 MAY 2026

SC-1, 16 APR 2026 to 14 MAY 2026