

WAAS CH <b>57920</b> W12A	APP CRS <b>114°</b>	Rwy Ldg <b>4099</b> TDZE <b>961</b> Apt Elev <b>961</b>
---------------------------------	------------------------	---

# RNAV (GPS) RWY 12

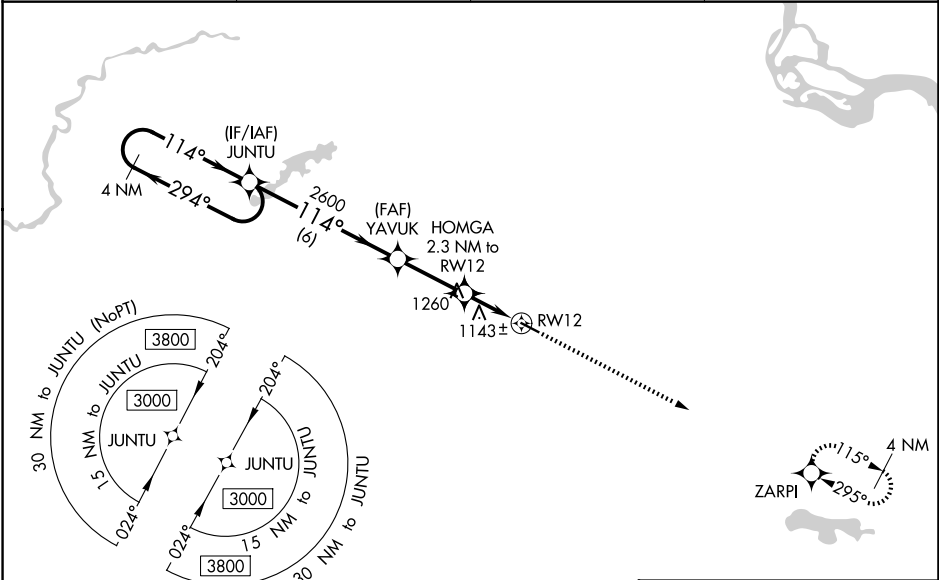
AIRLAKE (LVN)

RNP APCH.

**⚠** For uncompensated Baro-VNAV systems, LNAV/VNAV NA below -16°C (4°F) or above 54°C (130°F). Rwy 12 helicopter visibility reduction below 1 SM NA. Straight-in Rwy 12, Circling Rwy 12 at night, operational VGSI required, remain on or above VGSI glidepath until threshold.

MISSED APPROACH: Climb to 3600 direct ZARPI and hold.

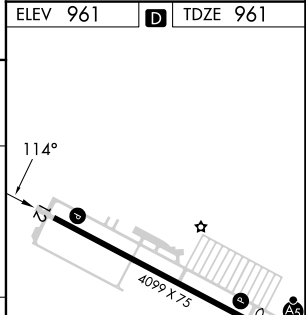
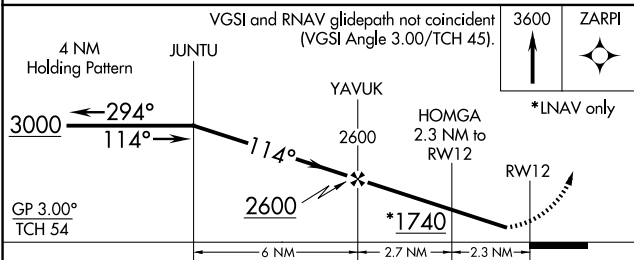
AWOS-3 <b>118.0</b>	MINNEAPOLIS APP CON <b>134.7 284.7</b>	CLNC DEL <b>118.95</b>	UNICOM <b>123.0 (CTAF) 0</b>
------------------------	---	---------------------------	---------------------------------



NC-1, 16 APR 2026 to 14 MAY 2026

NC-1, 16 APR 2026 to 14 MAY 2026

ELEV 961	<b>D</b> TDZE 961
----------	-------------------



CATEGORY	A	B	C	D
LPV DA		1211-1	250 (300-1)	
LNAV/VNAV DA		1270-1	309 (400-1)	
LNAV MDA	1400-1	439 (500-1)	1400-1¼	439 (500-1¼)
CIRCLING	1460-1	499 (500-1)	1660-2	1700-2¼
			699 (700-2)	739 (800-2¼)

REIL Rwy 12 0  
HIRL Rwy 12-30 0