

VORTAC FGT <b>115.7</b> Chan <b>104</b>	APP CRS <b>085°</b>	Rwy Ldg <b>4099</b> TDZE <b>961</b> Apt Elev <b>961</b>
---	------------------------	---

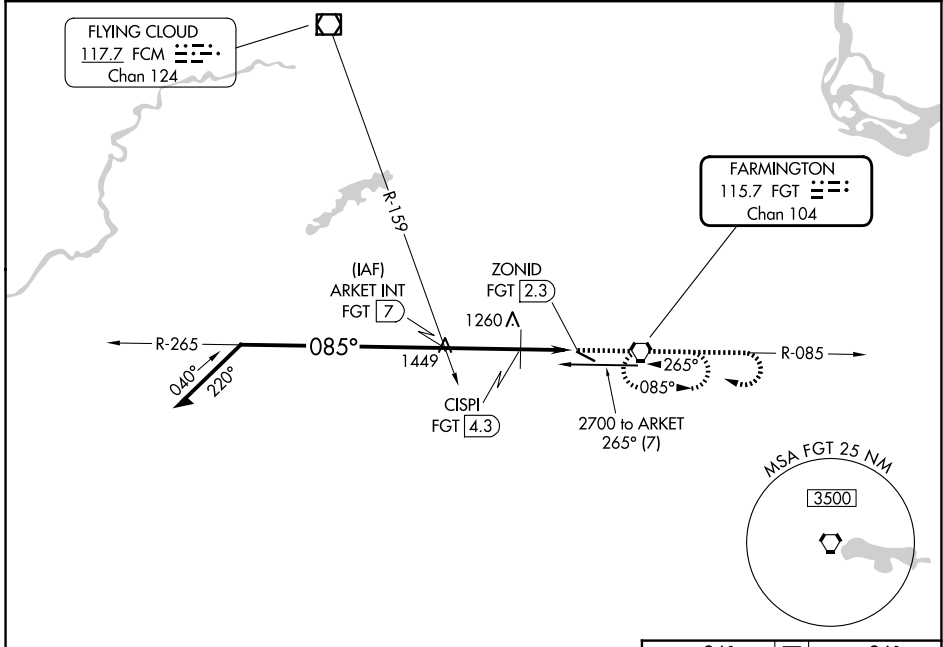
# VOR RWY 12

AIRLAKE (LVN)

**⚠** Rwy 12 helicopter visibility reduction below 1 SM NA.  
Straight-in Rwy 12, Circling Rwy 12 at night, operational VGSI required, remain on or above VGSI glidepath until threshold.

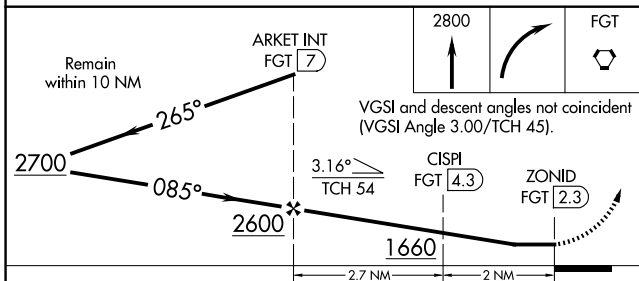
MISSED APPROACH: Climb to 2800 then right turn direct FGT VORTAC and hold.

AWOS-3 <b>118.0</b>	MINNEAPOLIS APP CON <b>134.7 284.7</b>	CLNC DEL <b>118.95</b>	UNICOM <b>123.0 (CTAF) ①</b>
------------------------	---	---------------------------	---------------------------------



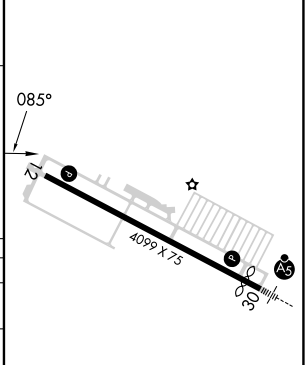
NC-1, 16 APR 2026 to 14 MAY 2026

NC-1, 16 APR 2026 to 14 MAY 2026



ELEV 961	<b>D</b> TDZE 961
----------	-------------------

CATEGORY	A	B	C	D
S-12	1660-1	699 (700-1)	1660-2	699 (700-2)
CIRCLING	1660-1	699 (700-1)	1660-2 699 (700-2)	1700-2¼ 739 (800-2¼)
CISPI FIX MINIMUMS				
S-12	1520-1	559 (600-1)	1520-1½	559 (600-1½)
CIRCLING	1520-1	559 (600-1)	1660-2 699 (700-2)	1700-2¼ 739 (800-2¼)



REIL Rwy 12 ①	HIRL Rwy 12-30 ①	FAF to MAP 4.7 NM			
Knots	60	90	120	150	180
Min:Sec	4:42	3:08	2:21	1:53	1:34