

WAAS CH 57917 W01A	APP CRS 008°	Rwy Idg TDZE 969 Apt Elev 969
--	------------------------	---

RNAV (GPS) RWY 1

LAFAYETTE MUNI (3M7)

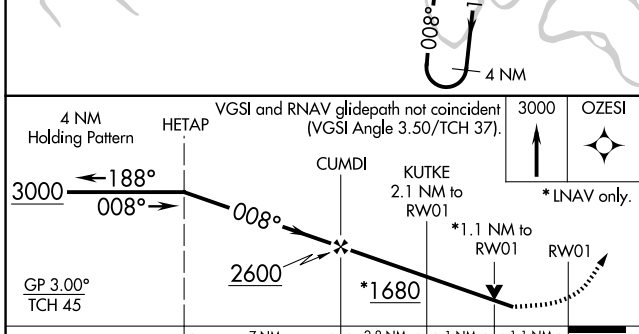
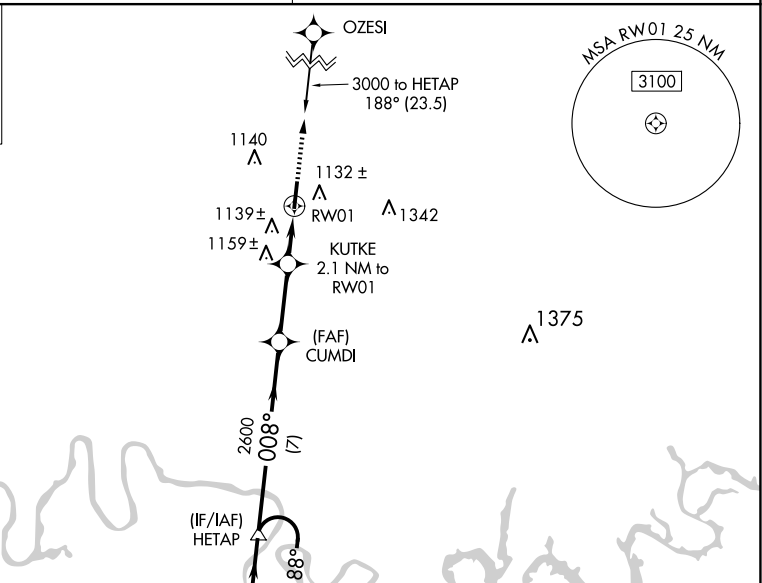
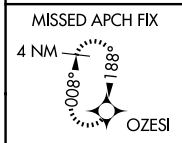
RNP APCH - GPS.

▼ For uncompensated Baro-VNAV systems, LNAV/VNAV NA below -16°C or above 47°C.
▲ NA Obtain local altimeter setting on CTAF; when not received, use Bowling Green altimeter setting: increase LPV DA to 1441 feet and all visibilities ½ SM; increase LNAV/VNAV DA to 1585 feet and all visibilities ½ SM; increase all MDAs 140 feet and visibility LNAV Cat C and D ¼ SM and Circling Cat C and D ½ SM. VDP and Baro-VNAV NA when using Bowling Green altimeter setting. Rwy 1 helicopter visibility reduction below ¾ SM NA.

MISSED APPROACH:
Climb to 3000 direct OZESI and hold.

NASHVILLE APP CON **118.4 360.7**

UNICOM **122.8 (CTAF) 0**



ELEV 969 **D** TDZE 969

MIRL Rwy 1-19
REIL Rws 1 and 19

CATEGORY	A	B	C	D
LPV DA	1318-1¼		349 (400-1¼)	
LNAV/VNAV DA	1452-1¾		483 (500-1¾)	
LNAV MDA	1400-1	431 (500-1)	1400-1¼ 431 (500-1¼)	1400-1½ 431 (500-1½)
CIRCLING	1440-1	471 (500-1)	1600-1¾ 631 (700-1¾)	1700-2¼ 731 (800-2¼)

SE-1, 16 APR 2026 to 14 MAY 2026

SE-1, 16 APR 2026 to 14 MAY 2026