

APP CRS	Rwy Idg	5100
151°	TDZE	968
	Apt Elev	968

RNAV (GPS) RWY 15

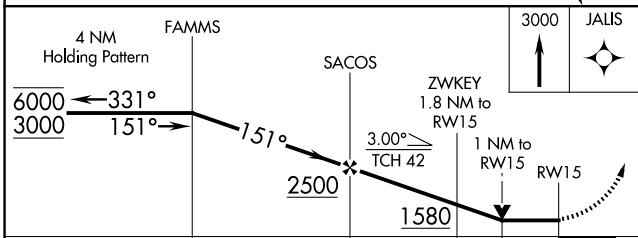
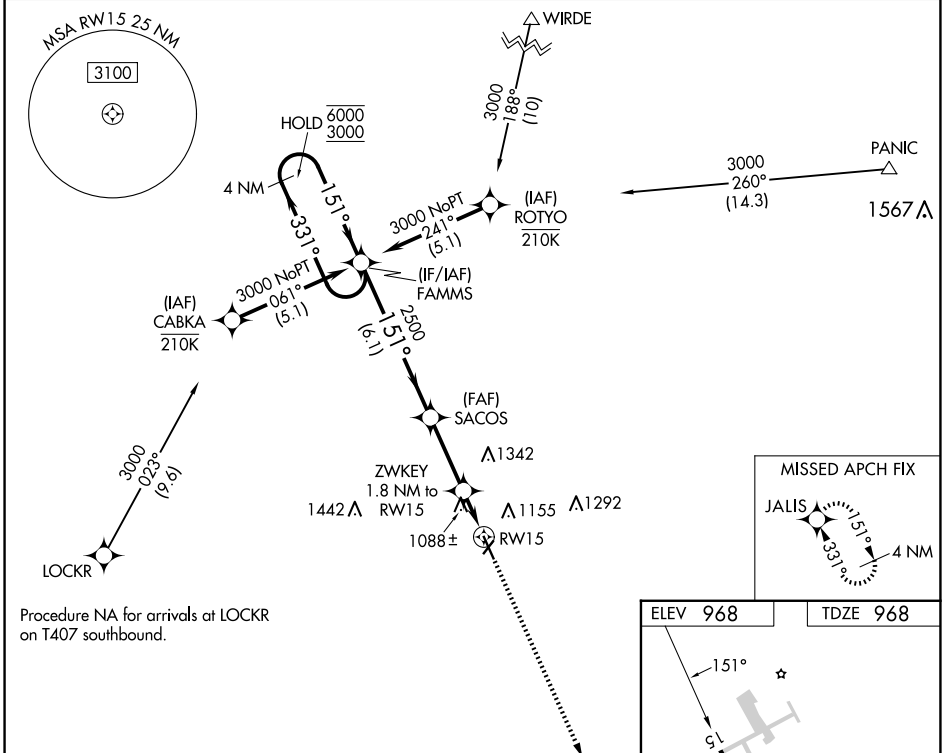
HARRY STERN (BWP)

RNP APCH - GPS.

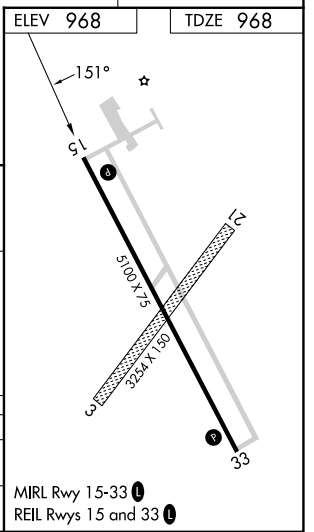
⚠ Circling NA to Rwy 3 and 21. Rwy 15 helicopter visibility reduction below $\frac{3}{4}$ SM NA. VDP NA when using FFM altimeter setting. When local altimeter setting not received, use FFM altimeter setting and increase all MDAs 80 feet and LNAV visibility Cat C and D $\frac{3}{8}$ SM, and Circling visibility Cat C and D $\frac{1}{4}$ SM.

MISSED APPROACH: Climb to 3000 direct JALIS and hold.

AWOS-3 127.875	MINNEAPOLIS CENTER 127.35 278.3	UNICOM 123.0 (CTAF) 0
--------------------------	---	---------------------------------



CATEGORY	A	B	C	D
LNAV MDA	1340-1 372 (400-1)			
CIRCLING	1520-1	552 (600-1)	1660-2 692 (700-2)	1660-2 $\frac{1}{4}$ 692 (700-2 $\frac{1}{4}$)



NC-1, 16 APR 2026 to 14 MAY 2026

NC-1, 16 APR 2026 to 14 MAY 2026