

WAAS CH <b>77930</b> <b>W33A</b>	APP CRS <b>331°</b>	Rwy Idg TDZE <b>968</b> Apt Elev <b>968</b>	<b>5100</b> <b>968</b> <b>968</b>
--	------------------------	---	---

# RNAV (GPS) RWY 33

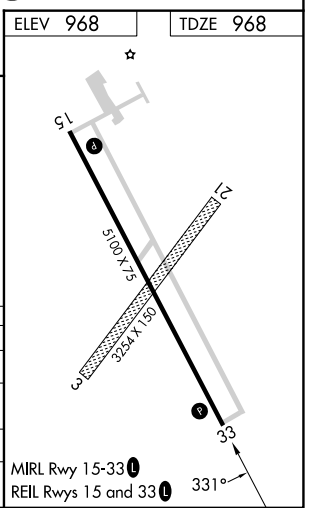
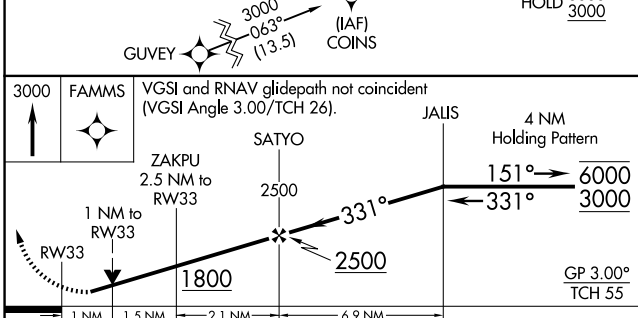
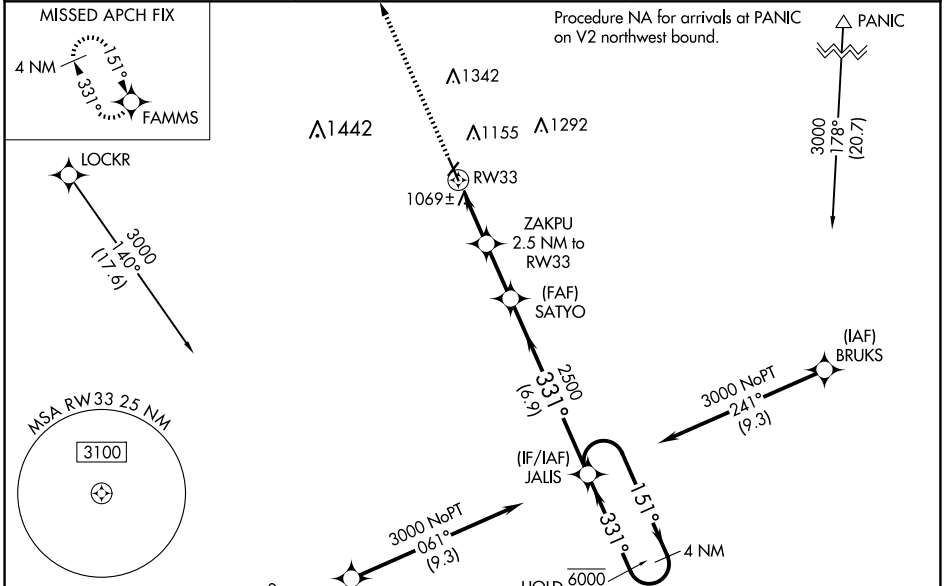
HARRY STERN (BWP)

RNP APCH - GPS.

⚠ Circling NA to Rwys 3 and 21. For uncompensated Baro-VNAV systems, LNAV/VNAV NA below -16°C or above 54°C. Rwy 33 helicopter visibility reduction below 3/4 SM NA. Baro-VNAV and VDP NA when using FFM altimeter setting. When local altimeter setting not received, use FFM altimeter setting and increase LPA DA to 1290 feet and all visibilities 1/2 SM. Increase LNAV/VNAV DA to 1322 feet and all visibilities 1/8 SM. Increase all MDAs 80 feet and LNAV visibility Cat C/D 1/4 SM, and Circling visibility Cat C/D 1/4 SM.

MISSED APPROACH: Climb to 3000 direct FAMMS and hold.

AWOS-3 <b>127.875</b>	MINNEAPOLIS CENTER <b>127.35 278.3</b>	UNICOM <b>123.0 (CTAF)</b>
--------------------------	---	-------------------------------



CATEGORY	A	B	C	D
LPV DA		1218-3/4	250 (300-3/4)	
LNAV/VNAV DA		1250-7/8	282 (300-7/8)	
LNAV MDA		1320-1	352 (400-1)	
CIRCLING	1520-1	552 (600-1)	1660-2 692 (700-2)	1660-2 1/4 692 (700-2 1/4)

NC-1, 16 APR 2026 to 14 MAY 2026

NC-1, 16 APR 2026 to 14 MAY 2026