

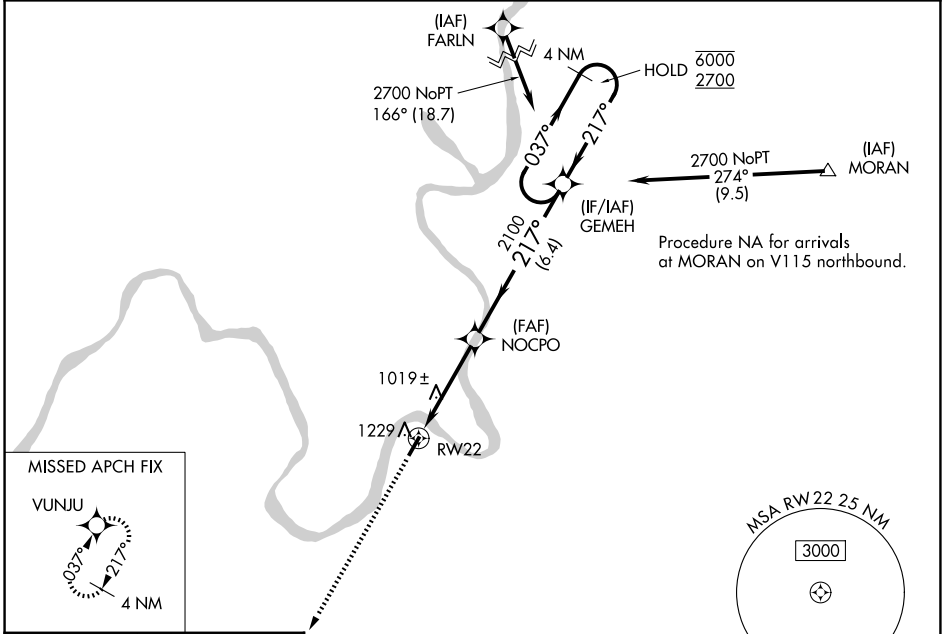
WAAS CH <b>61323</b> <b>W22A</b>	APP CRS <b>217°</b>	Rwy Ldg TDZE <b>758</b> Apt Elev <b>758</b>
--	------------------------	---

# RNAV (GPS) RWY 22

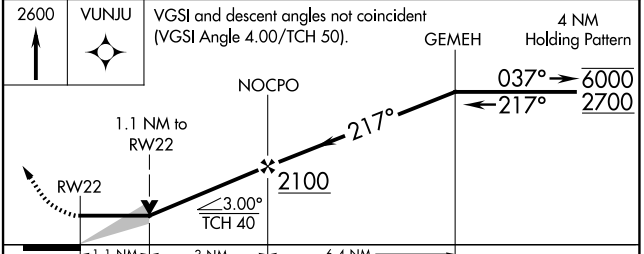
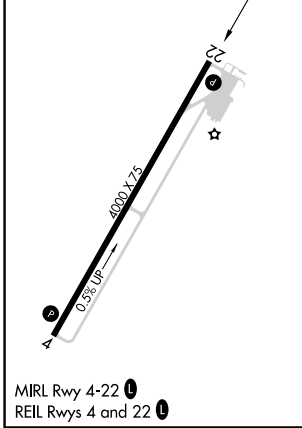
JACKSON COUNTY (I18)

RNP APCH - GPS.	MISSED APPROACH: Climb to 2600 direct VUNJU and hold.
<p>⚠️ Circling Rwy 4 NA at night. VDP NA when using 312 altimeter setting. When local altimeter setting not received, use 312 altimeter setting and increase all MDAs 60 feet; increase LP visibility Cat C ¼ SM and Circling visibility Cat C ¼ SM.</p>	

AWOS-2 <b>121.3</b>	HUNTINGTON APP CON <b>128.4 270.1</b>	UNICOM <b>122.8 (CTAF) 0</b>
------------------------	--	---------------------------------



ELEV 758	TDZE 758
----------	----------



CATEGORY	A	B	C	D
LP MDA	1280-1	522 (600-1)	1280-1½ 522 (600-1½)	NA
LNAV MDA	1540-1 782 (800-1)	1540-1¼ 782 (800-1¼)	1540-2½ 782 (800-2½)	NA
CIRCLING	1600-1¼	842 (900-1¼)	1600-2½ 842 (900-2½)	NA

NE-4, 16 APR 2026 to 14 MAY 2026

NE-4, 16 APR 2026 to 14 MAY 2026