

LOC I-RGK 110.1	APP CRS 091°	Rwy Idg TDZE Apt Elev	5010 778 778
---------------------------	------------------------	-----------------------------	---

ILS or LOC RWY 9

RED WING RGNL (RGK)

ADF Required. When local altimeter setting not received, use South St. Paul altimeter setting; increase S-ILS 9 DA to 1050 feet; increase all MDA 80 feet and visibility S-LOC 9 Cat C/D 1/8 SM and Circling Cat B/C 1/4 SM. For inop MALSRS, increase S-LOC 9 Cat C/D visibility 1/4 mile. For inop MALSRS when using South St. Paul altimeter setting, increase S-ILS 9 all Cats visibility 3/8 mile, and S-LOC 9 Cat C/D visibility 3/4 mile.

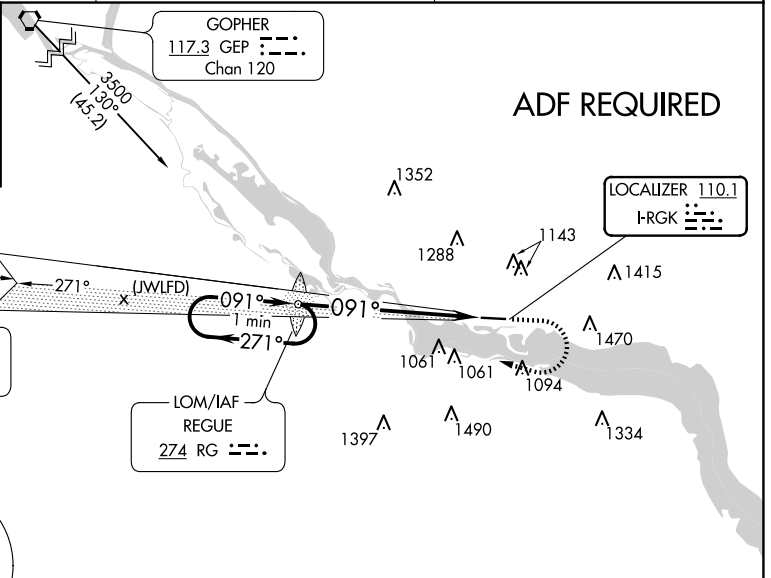
MALSRS
MISSED APPROACH:
 Climb to 2000 then climbing right turn to 3000 direct REGUE LOM and hold.

AWOS-3 119.25	MINNEAPOLIS APP CON 121.2 335.65	UNICOM 123.05 (CTAF)
-------------------------	--	--------------------------------

ALTERNATE MISSED APCH FIX

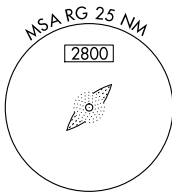
FARMINGTON
 115.7 FGT
 Chan 104

265° R-085

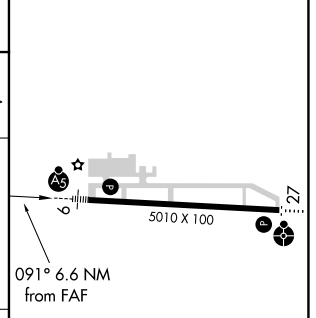
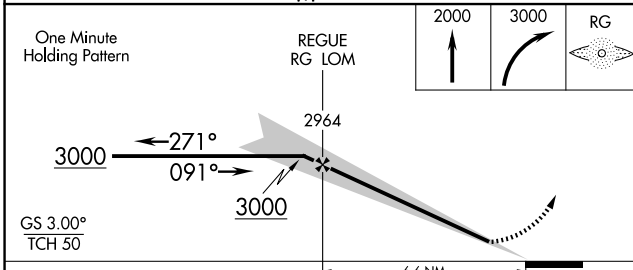


FARMINGTON
 115.7 FGT
 Chan 104

LOM/IAF REGUE
 274 RG



ELEV 778	TDZE 778
----------	----------



CATEGORY	A	B	C	D
S-ILS 9	978-1/2 200 (200-1/2)			
S-LOC 9	1520-1/2 742 (800-1/2)	1520-3/4 742 (800-3/4)	1520-1 3/4 862 (900-2 1/2)	742 (800-1 3/4)
CIRCLING	1520-1 742 (800-1)	1640-2 1/2 1002 (1100-3)		1780-3

HIRL Rwy 9-27				
FAF to MAP 6.6 NM				
Knots	60	90	120	150 180
Min:Sec	6:36	4:24	3:18	2:38 2:12

NC-1, 16 APR 2026 to 14 MAY 2026

NC-1, 16 APR 2026 to 14 MAY 2026