

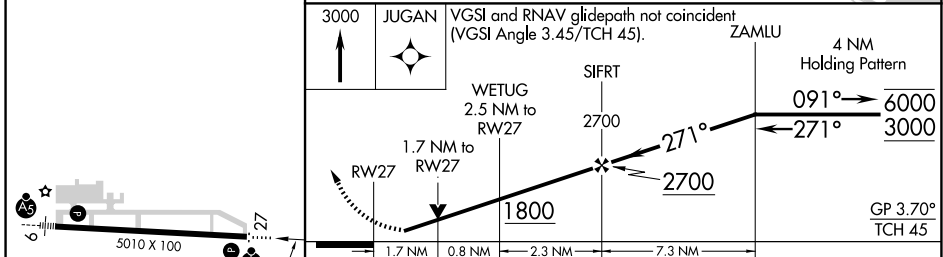
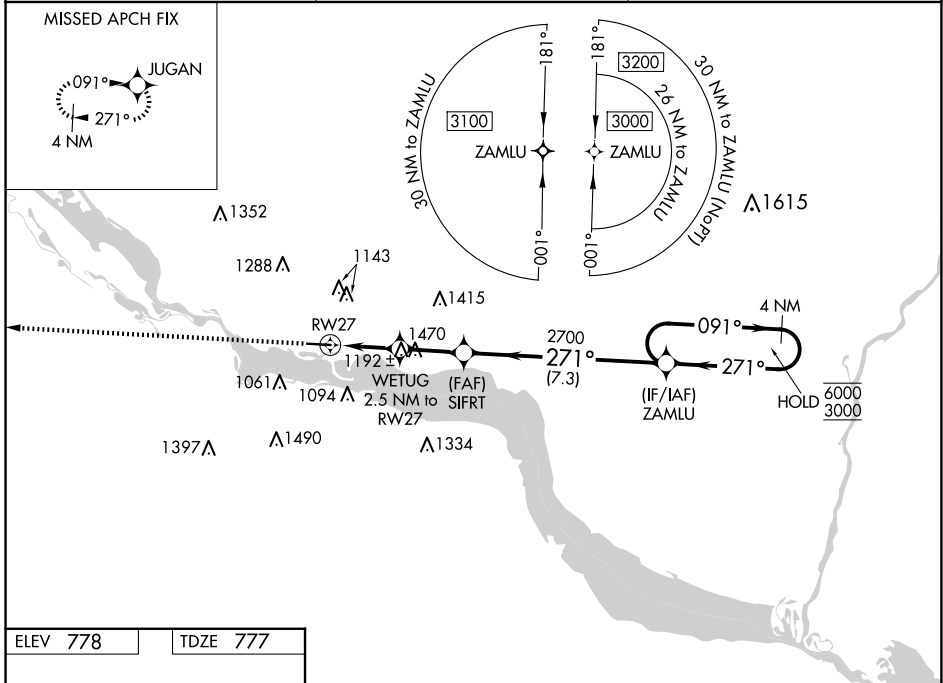
WAAS CH <b>99547</b> <b>W27A</b>	APP CRS <b>271°</b>	Rwy Ldg TDZE Apt Elev	<b>5010</b> <b>777</b> <b>778</b>
--	------------------------	-----------------------------	---

# RNAV (GPS) RWY 27

RED WING RGNL (RGK)

RNP APCH - GPS.	ODALS	MISSED APPROACH: Climb to 3000 direct JUGAN and hold.
<p><b>⚠</b> Circling Rwy 9 NA at night. For uncompensated Baro-VNAV systems, LNAV/VNAV NA below -16°C or above 54°C. Rwy 27 helicopter visibility reduction below ¾ SM NA.</p>		

AWOS-3 <b>119.25</b>	MINNEAPOLIS APP CON <b>121.2 335.65</b>	UNICOM <b>123.05 (CTAF) 0</b>
-------------------------	--	----------------------------------



ELEV 778	TDZE 777	<p>3000 JUGAN VGS1 and RNAV glidepath not coincident (VGS1 Angle 3.45/TCH 45). ZAMLU</p> <p>WETUG 2.5 NM to RW27 SIFRT 2700 4 NM Holding Pattern</p> <p>RW27 1.7 NM RW27 0.8 NM 2700 091° 6000 271° 3000</p> <p>1800 2700 7.3 NM</p> <p>GP 3.70° TCH 45</p>				
		CATEGORY	A	B	C	D
		LPV DA	1046-¾ 269 (300-¾)		1077-¾ 300 (300-¾)	NA
		LNAV/VNAV DA	1460-1 7/8 683 (700-1 7/8)			NA
		LNAV MDA	1460-¾ 683 (700-¾)		1460-1 7/8 683 (700-1 7/8)	NA
		<b>C</b> CIRCLING	1480-1 702 (800-1)	1520-1 742 (800-1)	1640-2 1/2 862 (900-2 1/2)	NA

NC-1, 16 APR 2026 to 14 MAY 2026

NC-1, 16 APR 2026 to 14 MAY 2026