


WAAS CH 56526 W09A	APP CRS 091°	Rwy Idg TDZE Apt Elev	5010 778 778
--	------------------------	-----------------------------	---

RNAV (GPS) RWY 9

RED WING RGNL (RGK)

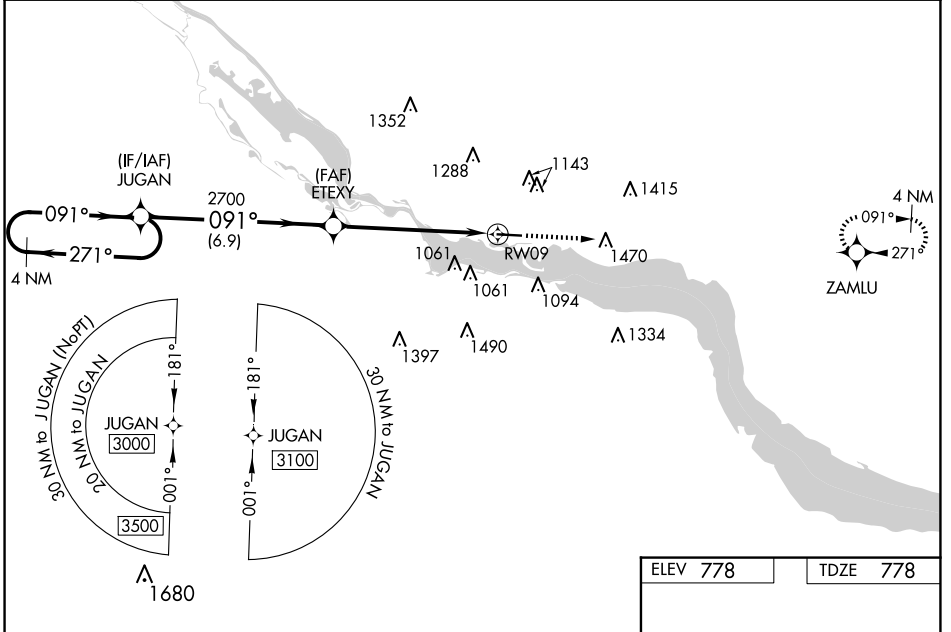
⚠ Baro-VNAV NA when using South St. Paul altimeter setting. For uncompensated Baro-VNAV systems, LNAV/VNAV NA below -16°C (4°F) or above 38°C (100°F). DME/DME RNP-0.3 NA. VDP NA with South St. Paul altimeter setting. When local altimeter setting not received, use South St. Paul altimeter setting; increase LPV DA to 1050 feet, LNAV/VNAV DA to 1232 feet, and visibility LNAV/VNAV 3/8 SM all Cats; increase all MDA 80 feet and visibility LNAV Cat B/C/D and Circling Cat B/C 1/4 SM. For inop MALSRL, increase LNAV Cat C/D visibility 3/8 mile. For inop MALSRL when using South St. Paul altimeter setting, increase LPV visibility 3/8 mile all Cats, LNAV/VNAV all Cats and LNAV Cat C/D visibility 3/8 mile.

MALSRL



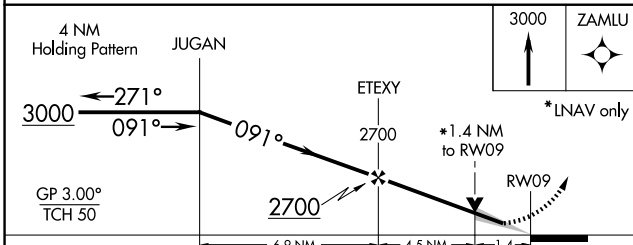
MISSED APPROACH:
Climb to 3000 direct ZAMLU and hold.

AWOS-3 119.25	MINNEAPOLIS APP CON 121.2 335.65	UNICOM 123.05 (CTAF) 0
-------------------------	--	---

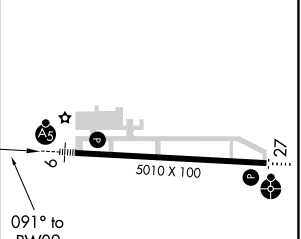


NC-1, 16 APR 2026 to 14 MAY 2026

NC-1, 16 APR 2026 to 14 MAY 2026



ELEV 778	TDZE 778
----------	----------



3000 | **ZAMLU**

*LNAV only

1.4 NM to RWY 9

6.9 NM | 4.5 NM | 1.4 NM

CATEGORY	A	B	C	D
LPV DA		978-1/2	200 (200-1/2)	
LNAV/VNAV DA		1160-3/4	382 (400-3/4)	
LNAV MDA	1260-1/2	482 (500-1/2)	1260-1	482 (500-1)
CIRCLING	1480-1 702 (800-1)	1520-1 742 (800-1)	1640-2 1/2 862 (900-2 1/2)	1780-3 1002 (1100-3)

HIRL Rwy 9-27 **0**