

WAAS CH <b>53726</b> <b>W24A</b>	APP CRS <b>239°</b>	Rwy Ldg TDZE Apt Elev	<b>3951</b> <b>1472</b> <b>1497</b>
--	------------------------	-----------------------------	---

# RNAV (GPS) RWY 24

PRICE COUNTY (PBH)

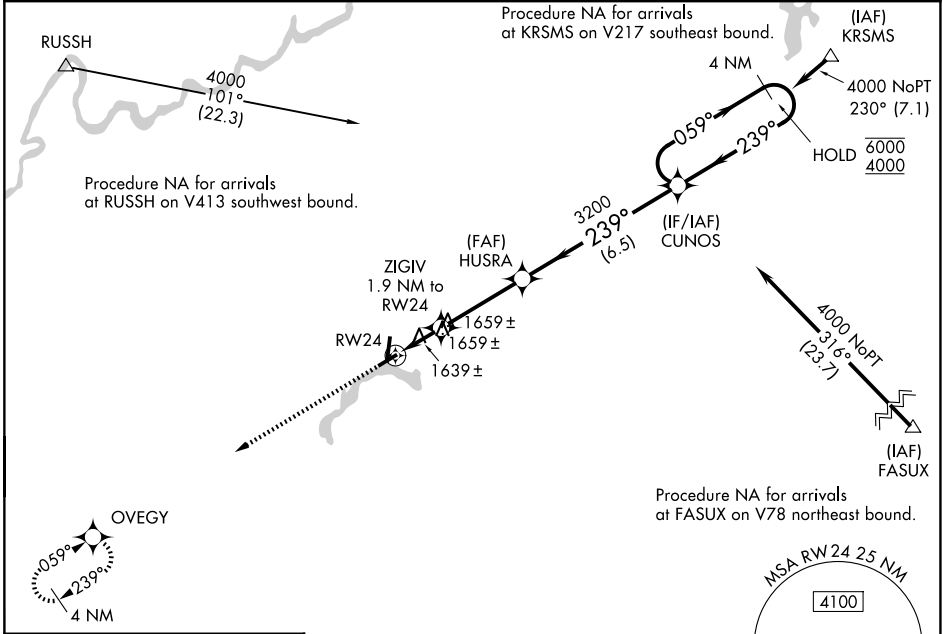
RNP APCH - GPS.

**▼** Rwy 24 helicopter visibility reduction below 1 SM NA. When local altimeter setting not received, use Minocqua-Woodruff altimeter setting and increase all MDAs 100 feet and visibility Cats C and D ½ SM. Straight-in Rwy 24 NA at night, Circling Rwy 6, 24 NA at night.

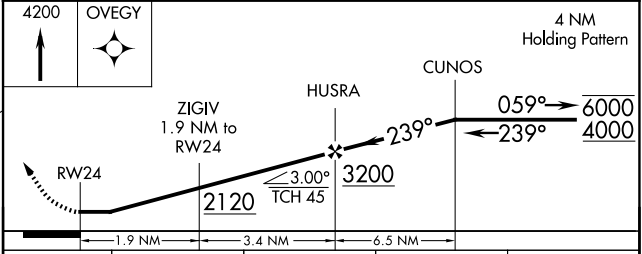
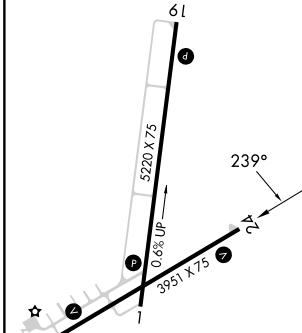
**▲**

**MISSED APPROACH:**  
Climb to 4200 direct OVEGY and hold.

AWOS-3 <b>125.875</b>	MINNEAPOLIS CENTER <b>133.65 281.5</b>	UNICOM <b>122.8 (CTAF) 0</b>
--------------------------	---	---------------------------------



ELEV 1497	TDZE 1472
-----------	-----------



CATEGORY	A	B	C	D
LP MDA	1900-1	428 (500-1)	1900-1¼	428 (500-1¼)
LNAV MDA	1920-1	448 (500-1)	1920-1¾	448 (500-1¾)
CIRCLING	2100-1	603 (700-1)	2100-1¾ 603 (700-1¾)	2260-2½ 763 (800-2½)

REIL Rwy 1, 19 and 24  
MIRL Rwy 1-19 and 6-24

EC-3, 16 APR 2026 to 14 MAY 2026

EC-3, 16 APR 2026 to 14 MAY 2026