

WAAS CH <b>58225</b> <b>W32A</b>	APP CRS <b>324°</b>	Rwy Idg TDZE Apt Elev	<b>3600</b> <b>977</b> <b>992</b>
--	------------------------	-----------------------------	---

# RNAV (GPS) RWY 32

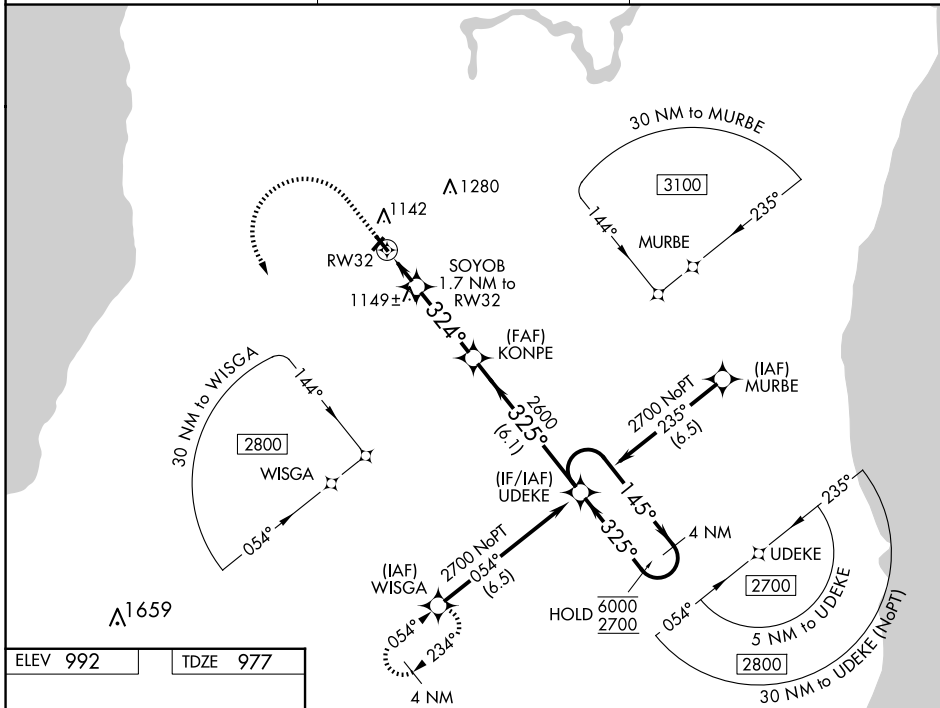
NEW HOLSTEIN MUNI (8D1)

RNP APCH.

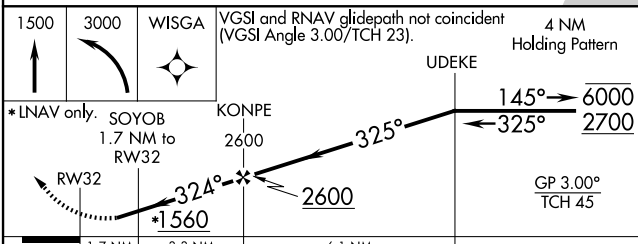
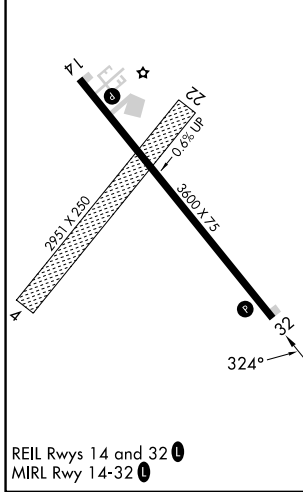
⚠ Circling NA to Rws 4 and 22. Rwy 32 helicopter visibility reduction below 1 SM NA.  
 ⚠ Baro-VNAV NA. Use Oshkosh altimeter setting, when not received use Appleton altimeter setting. Straight-in Rwy 32 NA at night, Circling Rwy 32 NA at night.

MISSED APPROACH: Climb to 1500 then climbing left turn to 3000 direct WISGA and hold.

OSH ASOS <b>125.9</b>	MILWAUKEE APP CON <b>127.0 263.075</b>	UNICOM <b>123.0 (CTAF) 0</b>
--------------------------	---	---------------------------------



ELEV 992	TDZE 977
----------	----------



CATEGORY	A	B	C	D
LPV DA	1376-1 $\frac{1}{8}$	399 (400-1 $\frac{1}{8}$ )		NA
LNAV/VNAV DA	1509-1 $\frac{1}{8}$	532 (600-1 $\frac{1}{8}$ )		NA
LNAV MDA	1480-1	503 (500-1)		NA
CIRCLING	1540-1	548 (600-1)		NA

EC-3, 16 APR 2026 to 14 MAY 2026

EC-3, 16 APR 2026 to 14 MAY 2026