

APP CRS <b>274°</b>	Rwy Ldg TDZE Apt Elev	<b>3250</b> <b>458</b> <b>458</b>
------------------------	-----------------------------	---

# RNAV (GPS) RWY 28

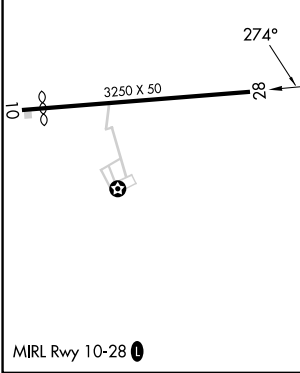
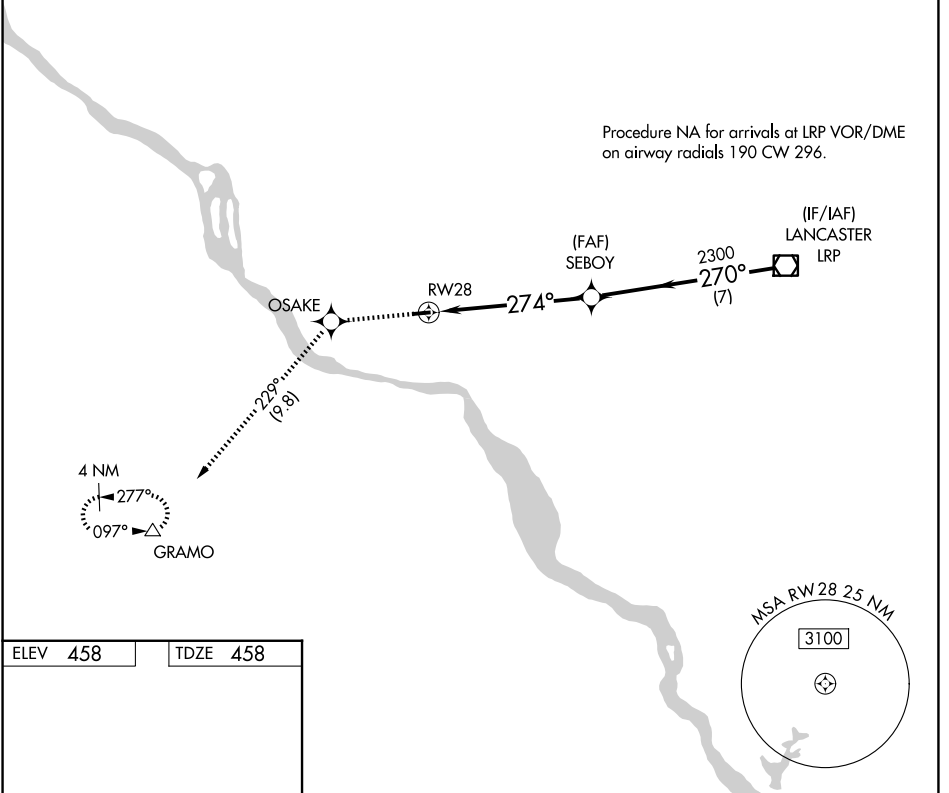
DONEGAL SPRINGS AIRPARK (N71)

RNP APCH - GPS.

**NA** Rwy 28 helicopter visibility reduction below 3/4 SM NA. Use MDT altimeter setting; when not received, use MUI altimeter setting and increase all MDAs 20 feet. Procedure NA at night.

MISSED APPROACH: Climb to 3000 direct OSAKE and on track 229° to GRAMO and hold.

MDT ASOS <b>118.8</b>	HARRISBURG APP CON <b>126.45 281.525</b>	CLNC DEL <b>127.05</b>	UNICOM <b>122.8 (CTAF)</b>
--------------------------	---	---------------------------	-------------------------------



ELEV 458	TDZE 458				
3000	OSAKE	GRAMO	LRP VOR/DME		
↑	✧	tr 229°	△		
10	3250 X 50	28	SEBOY	2300	2600
			274°	270°	
			≤ 3.00°	TCH 40	
		5.8 NM	7 NM		
CATEGORY	A	B	C	D	
LNAV MDA	920-1	462 (500-1)	NA		
CIRCLING	920-1	940-1	NA		
	462 (500-1)	482 (500-1)			

NE-4, 16 APR 2026 to 14 MAY 2026

NE-4, 16 APR 2026 to 14 MAY 2026