

VOR/DME LRP 117.3 Chan 120	APP CRS 272°	Rwy Ldg 3250 TDZE 458 Apt Elev 458
--	------------------------	---

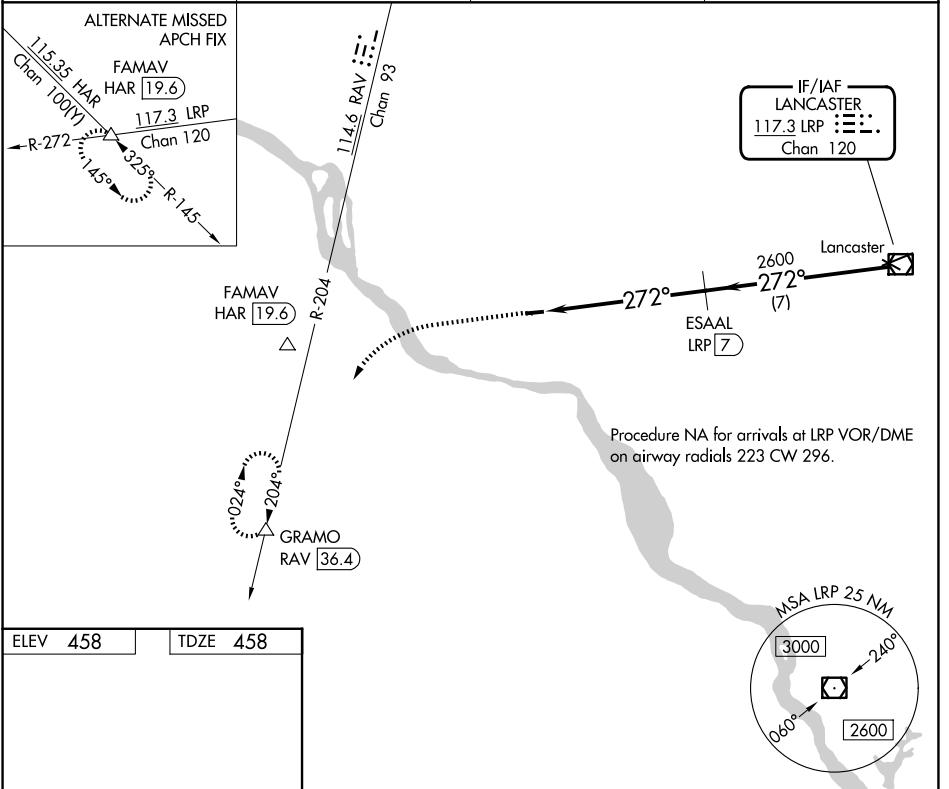
VOR RWY 28
DONEGAL SPRINGS AIRPARK (N71)

DME required.

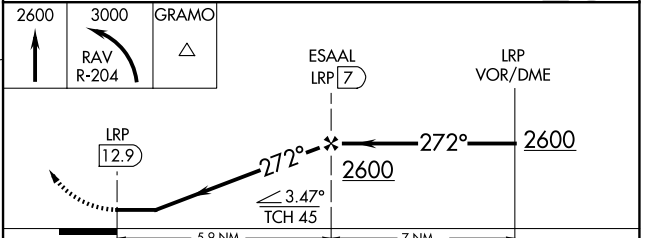
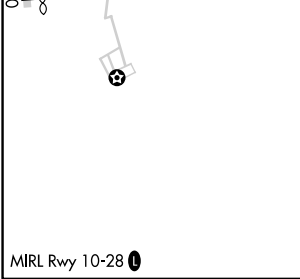
▼ Use Harrisburg Intl altimeter setting; when not received, use Fort Indiantown Gap altimeter setting and increase all MDAs 20 feet. Rwy 28 helicopter visibility reduction below 1 SM NA. Procedure NA at night.

▲ NA MISSED APPROACH: Climb to 2600 then climbing left turn to 3000 on RAV R-204 to GRAMO/RAV 36.4 DME and hold.

MDT ASOS 118.8	HARRISBURG APP CON 126.45 281.525	HARRISBURG CLNC DEL 127.05	UNICOM 122.8 (CTAF) 0
--------------------------	---	--------------------------------------	---------------------------------



ELEV 458	TDZE 458
----------	----------



CATEGORY	A	B	C	D
S-28	940-1	482 (500-1)	NA	
CIRCLING	940-1 482 (500-1)	960-1 502 (600-1)	NA	

NE-4, 16 APR 2026 to 14 MAY 2026

NE-4, 16 APR 2026 to 14 MAY 2026