

WAAS CH 90341 W36A	APP CRS 359°	Rwy Ldg TDZE Apt Elev	5500 979 979
----------------------------------------	------------------------	-----------------------------	-----------------------------------------

RNAV (GPS) RWY 36

JAMES H CONNELL FLD AT INDEPENDENCE MUNI (IIB)

RNP APCH.

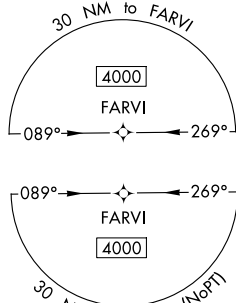
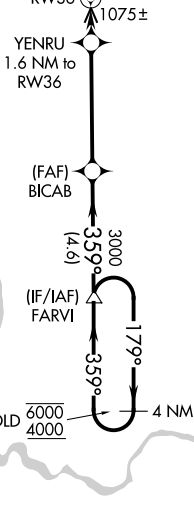
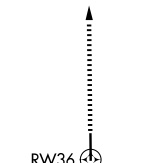
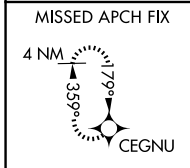
▼
▲ For uncompensated Baro-VNAV systems, LNAV/VNAV NA below -16°C or above 54°C.

MISSED APPROACH: Climb to 4000 direct CEGNU and hold, continue climb-in-hold to 4000.

AWOS-3
120.825

DES MOINES APP CON *
118.9 251.15

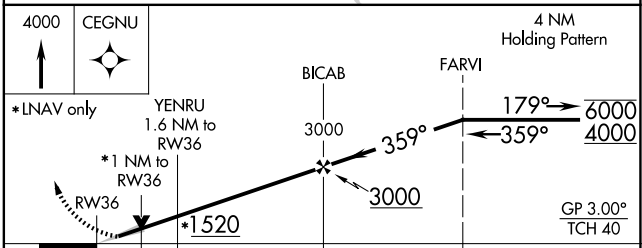
UNICOM
122.8 (CTAF) 0



NC-3, 16 APR 2026 to 14 MAY 2026

NC-3, 16 APR 2026 to 14 MAY 2026

ELEV 979	TDZE 979
MIRL Rwy 18-36	REIL Rwys 18 and 36



CATEGORY	A	B	C	D
LPV DA		1229-3/4	250 (300-3/4)	
LNAV/VNAV DA		1236-7/8	257 (300-7/8)	
LNAV MDA		1340-1	361 (400-1)	
CIRCLING	1500-1	521 (600-1)	1700-2 721 (800-2)	2440-3 1461 (1500-3)

RNAV (GPS) RWY 36