

WAAS CH <b>48826</b> <b>W09A</b>	APP CRS <b>092°</b>	Rwy Ldg TDZE Apt Elev	<b>4699</b> <b>774</b> <b>774</b>
--	------------------------	-----------------------------	---

# RNAV (GPS) RWY 9

GLADWIN ZETTEL MEML (GDW)

RNP APCH.

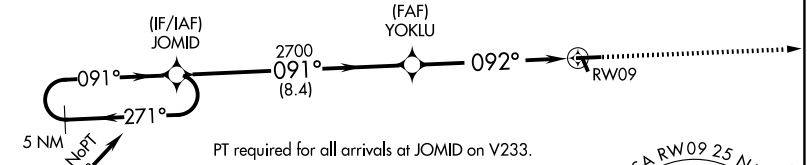
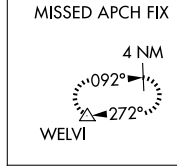
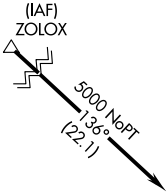
**⚠** Circling NA to Rwy 15 and 33. Rwy 9 helicopter visibility reduction below 1 SM NA. DME/DME RNP-0.3 NA. Procedure NA at night. Use Mount Pleasant altimeter setting; when not received, use Midland altimeter setting and increase all MDA 20 feet; increase LP and LNAV Cats C/D visibility  $\frac{1}{8}$  SM.

MISSED APPROACH: Climb to 3000 direct WELVI and hold.

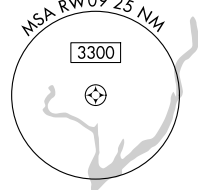
AWOS-3PT  
**118.975**

GREAT LAKES APP CON \*  
**126.45 235.625**

UNICOM  
**122.8 (CTAF) 0**



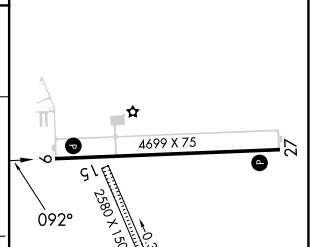
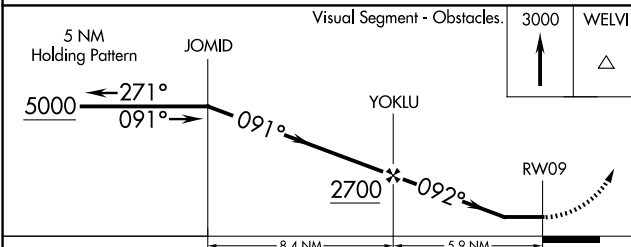
PT required for all arrivals at JOMID on V233.



EC-1, 16 APR 2026 to 14 MAY 2026

EC-1, 16 APR 2026 to 14 MAY 2026

ELEV 774	TDZE 774
----------	----------



CATEGORY	A	B	C	D
LP MDA	1440-1	666 (700-1)	1440-1 $\frac{7}{8}$	666 (700-1 $\frac{1}{8}$ )
LNAV MDA	1440-1	666 (700-1)	1440-1 $\frac{7}{8}$	666 (700-1 $\frac{1}{8}$ )
CIRCLING	1440-1 666 (700-1)	1500-1 726 (800-1)	1520-2 $\frac{1}{4}$ 746 (800-2 $\frac{1}{4}$ )	1700-3 926 (1000-3)

REIL Rwy 9 and 27 **0**  
MIRL Rwy 9-27 **0**