

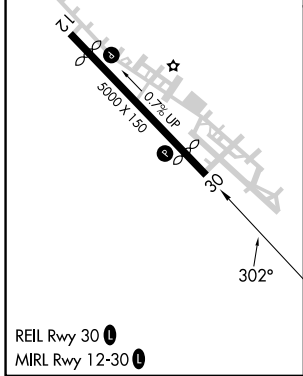
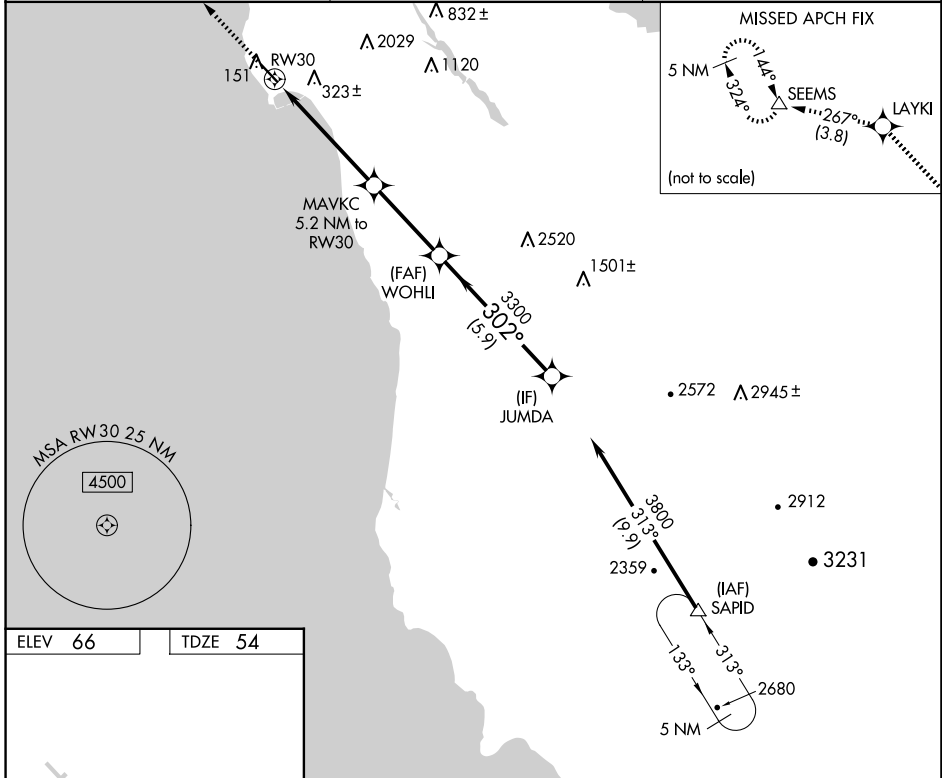
WAAS CH 50302 W30A	APP CRS 302°	Rwy Idg TDZE Apt Elev	4238 54 66
--	------------------------	-----------------------------	---------------------------------------

RNAV (GPS) RWY 30

HALF MOON BAY (HAF')

RNP APCH.	MISSED APPROACH: Climb to 4000 direct LAYKI and on track 267° to SEEMS and hold, continue climb-in-hold to 4000.
-----------	--

AWOS-3 127.275	NORCAL APP CON 135.1 307.2	UNICOM 122.8 (CTAF) 0
--------------------------	--------------------------------------	---------------------------------



4000	LAYKI	tr 267°	SEEMS	VGSi and RNAV glidepath not coincident (VGSi Angle 3.00/TCH 24).			
*LNAV only		MAVKC 5.2 NM to RW30		JUMDA			
*1.8 NM to RW30		3300		3800		GP 3.50° TCH 40	
1.8 NM		3.4 NM		3.4 NM		5.9 NM	
CATEGORY	A		B		C		D
LPV DA	381-1 327 (400-1)						
LNAV MDA	620-1 566 (600-1)		620-1½ 566 (600-1½)				

SW-2, 16 APR 2026 to 14 MAY 2026

SW-2, 16 APR 2026 to 14 MAY 2026