

APP CRS <b>178°</b>	Rwy Ldg TDZE Apt Elev	<b>4805</b> <b>779</b> <b>779</b>
------------------------	-----------------------------	---

# RNAV (GPS) RWY 18

MARSHALL MEML MUNI (MHL)

RNP APCH.

**▼** Rwy 18 helicopter visibility reduction below 3/4 SM NA. VDP NA when using Sedalia altimeter setting. Circling Rwy 9 and 27 NA. When local altimeter setting not received, use Sedalia altimeter setting and increase all MDAs 80 feet.

MISSED APPROACH: Climb to 3000 direct GOCOL and hold.

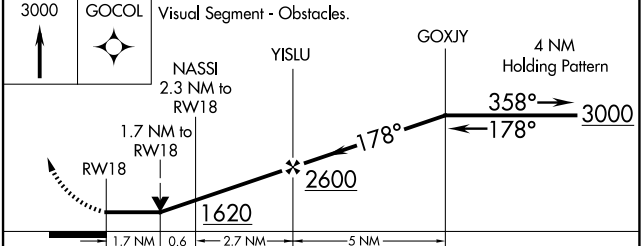
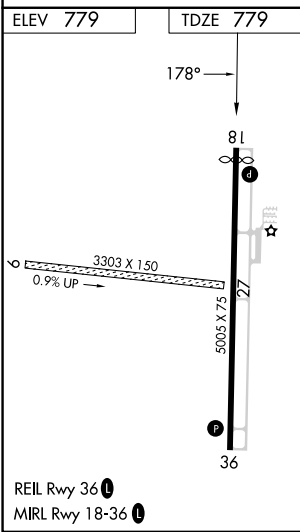
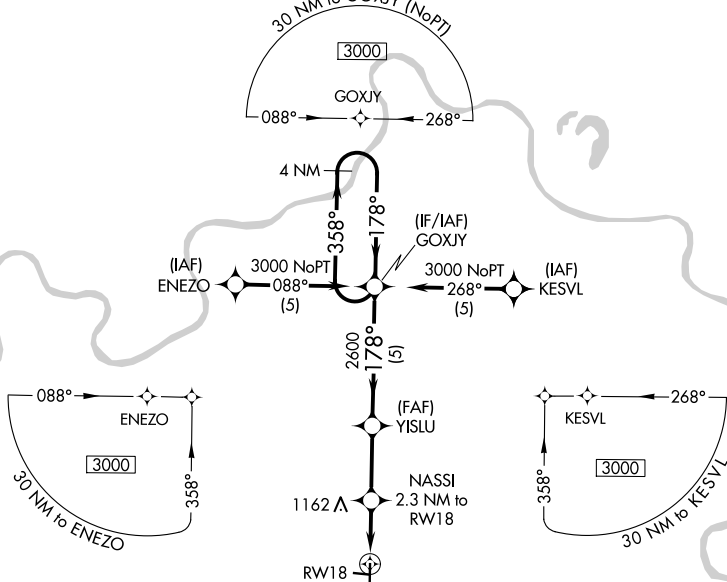
AWOS-3PT <b>118.675</b>
----------------------------

WHITEMAN APP CON * <b>127.45</b>
-------------------------------------

UNICOM <b>122.8 (CTAF) 0</b>
---------------------------------

NC-3, 16 APR 2026 to 14 MAY 2026

NC-3, 16 APR 2026 to 14 MAY 2026



CATEGORY	A	B	C	D
INAV MDA	1360-1	581 (600-1)		NA
CIRCLING	1360-1	581 (600-1)		NA