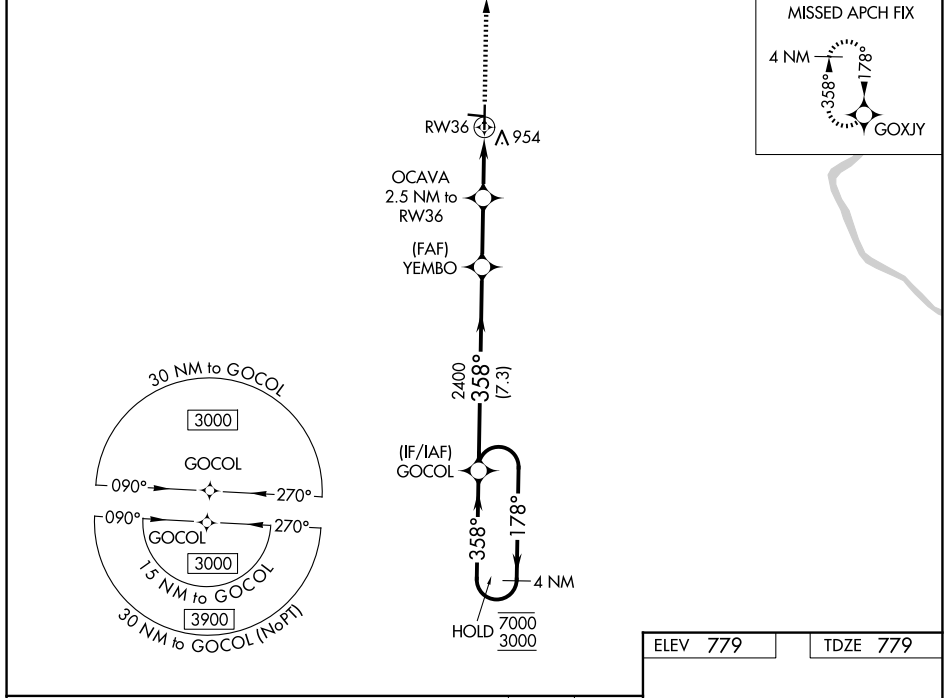


WAAS CH <b>93907</b> <b>W36A</b>	APP CRS <b>358°</b>	Rwy Ldg TDZE <b>779</b> Apt Elev <b>779</b>
----------------------------------------	------------------------	---------------------------------------------------

# RNAV (GPS) RWY 36

MARSHALL MEML MUNI (MHL)

RNP APCH - GPS. ▼ Circling NA to Rwy's 9 and 27. For uncompensated Baro-VNAV systems, LNAV/VNAV NA below -16°C or above 54°C.	MISSED APPROACH: Climb to 3000 direct GOXJY and hold.	
AWOS-3PT <b>118.675</b>	WHITEMAN APP CON * <b>127.45</b>	UNICOM <b>122.8 (CTAF) 0</b>



NC-3, 16 APR 2026 to 14 MAY 2026

NC-3, 16 APR 2026 to 14 MAY 2026

4 NM Holding Pattern		VGSI and RNAV glidepath not coincident (VGSI Angle 3.04/TCH 36).		ELEV 779	TDZE 779
7000	← 178°	3000	→ 358°	3000	GOXJY
GP 3.00°		2400	358°		
TCH 40		1600			
	7.3 NM	2.5 NM	1.4	1.1	
CATEGORY	A	B	C	D	
LPV DA	1029-1 250 (300-1)			NA	
LNAV/VNAV DA	1104-1 325 (400-1)			NA	
LNAV MDA	1180-1 401 (500-1)	1180-1 1/8 401 (500-1 1/8)		NA	
CIRCLING	1260-1 481 (500-1)	1480-2 701 (800-2)		NA	

