

# RNAV (GPS) RWY 9

VINTON VETERANS MEML AIRPARK (VTI)

APP CRS	Rwy Ldg	<b>4000</b>
<b>091°</b>	TDZE	<b>836</b>
	Apt Elev	<b>842</b>

RNP APCH - GPS.

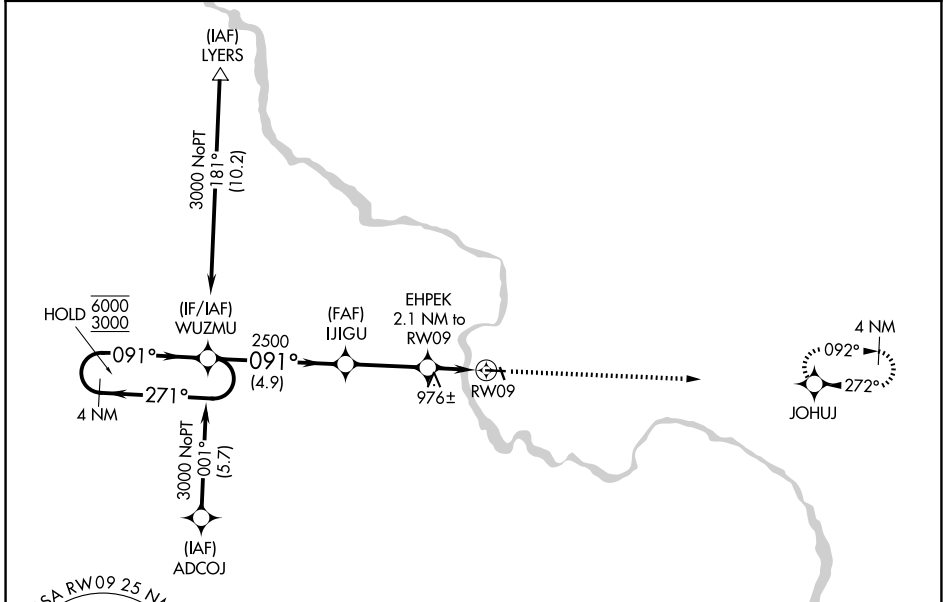
**⚠** Rwy 9 helicopter visibility reduction below 3/4 SM NA. VDP NA when using IIB altimeter setting. When local altimeter setting not received, use IIB altimeter setting and increase all MDA 60 feet.

MISSED APPROACH: Climb to 3000 direct JOHUJ and hold.

AWOS-3  
**120.075**

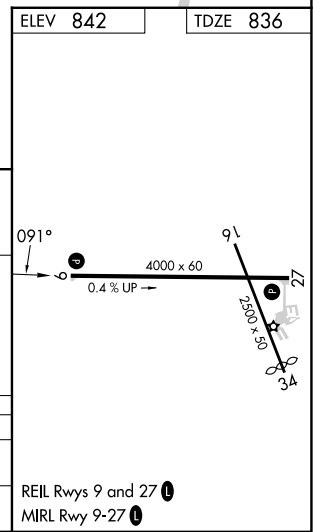
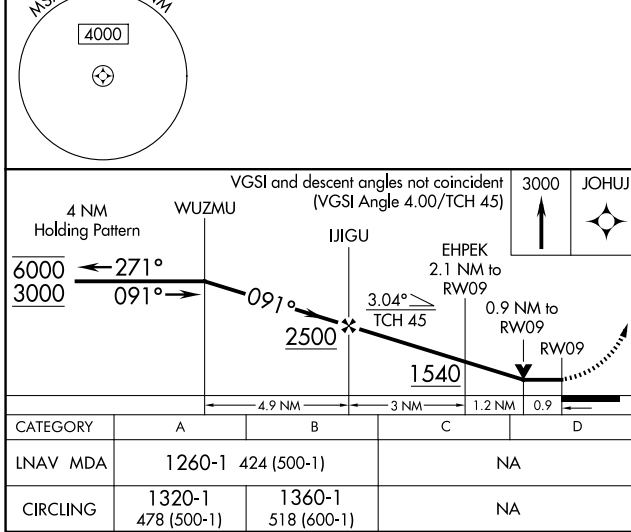
CEDAR RAPIDS APP CON ★  
**134.05 266.8**

UNICOM  
**122.8 (CTAF)**



NC-3, 16 APR 2026 to 14 MAY 2026

NC-3, 16 APR 2026 to 14 MAY 2026



VINTON, IOWA  
Amdt 1 07AUG25

42°13'N-92°02'W

# RNAV (GPS) RWY 9

REIL Rwy 9 and 27  
MIRL Rwy 9-27