

WAAS CH 70339 W34A	APP CRS 340°	Rwy Idg TDZE Apt Elev	3400 1107 1107
----------------------------------------	------------------------	-----------------------------	-------------------------------------------

RNAV (GPS) RWY 34

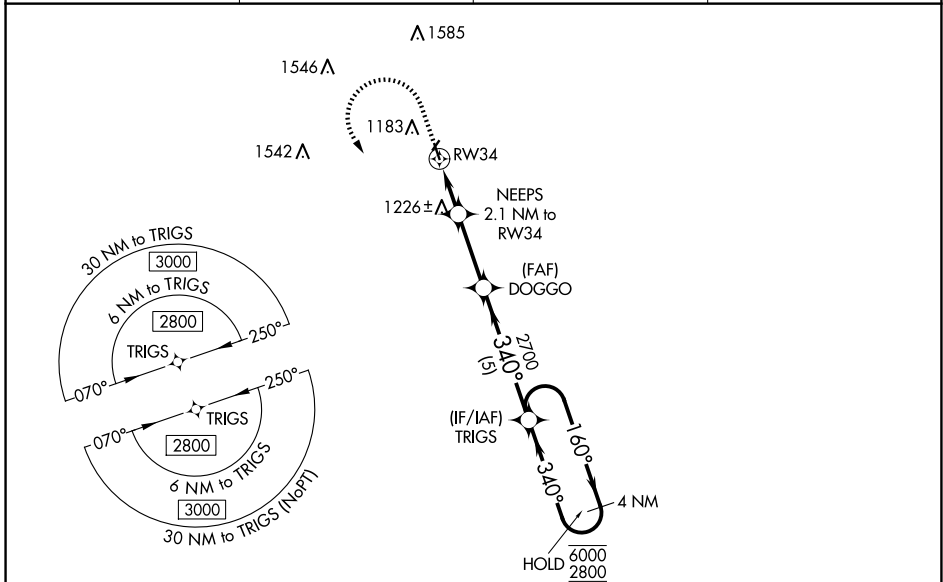
BLUE EARTH MUNI (SBU)

RNP APCH - GPS.

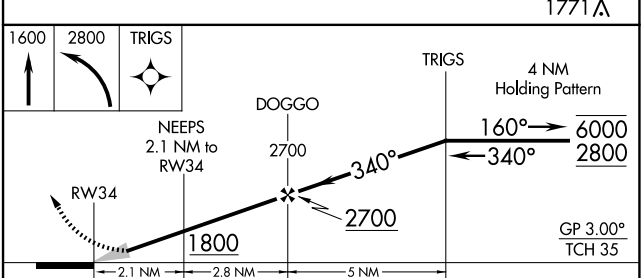
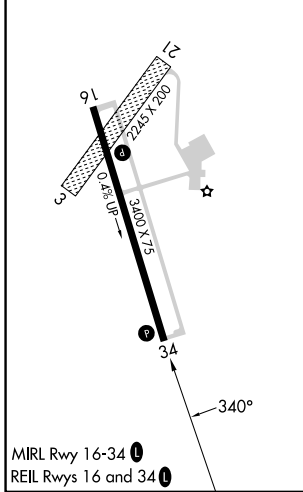
NA Baro-VNAV NA. Rwy 34 helicopter visibility reduction below 1 SM NA. Circling NA to Rwy 3 and 21. Use FRM altimeter setting; when not received, use FXY altimeter setting and increase LPV DA to 1443 feet and all visibilities 1/8 SM. Increase LNAV/VNAV DA to 1593 feet; increase all MDAs 60 feet and visibility Cat C 1/4 SM.

MISSED APPROACH: Climb to 1600 then climbing left turn to 2800 direct TRIGS and hold.

FRM AWOS-3PT 120.025	MINNEAPOLIS CENTER 127.75 257.7	GCO 121.725	UNICOM 122.8 (CTAF)
--------------------------------	-------------------------------------------	-----------------------	-------------------------------



ELEV 1107	TDZE 1107
-----------	-----------



CATEGORY	A	B	C	D
LPV DA	1398-1 291 (300-1)			NA
LNAV/VNAV DA	1548-1 3/8 441 (500-1 1/8)			NA
LNAV MDA	1520-1	413 (500-1)	1520-1 1/8 413 (500-1 1/8)	NA
C CIRCLING	1560-1 453 (500-1)	1580-1 473 (500-1)	1720-1 3/4 613 (700-1 3/4)	NA

NC-1, 16 APR 2026 to 14 MAY 2026

NC-1, 16 APR 2026 to 14 MAY 2026