

WAAS CH <b>63135</b> <b>W32A</b>	APP CRS <b>323°</b>	Rwy Idg <b>4400</b> TDZE <b>1800</b> Apt Elev <b>1800</b>
--	------------------------	---

# RNAV (GPS) RWY 32

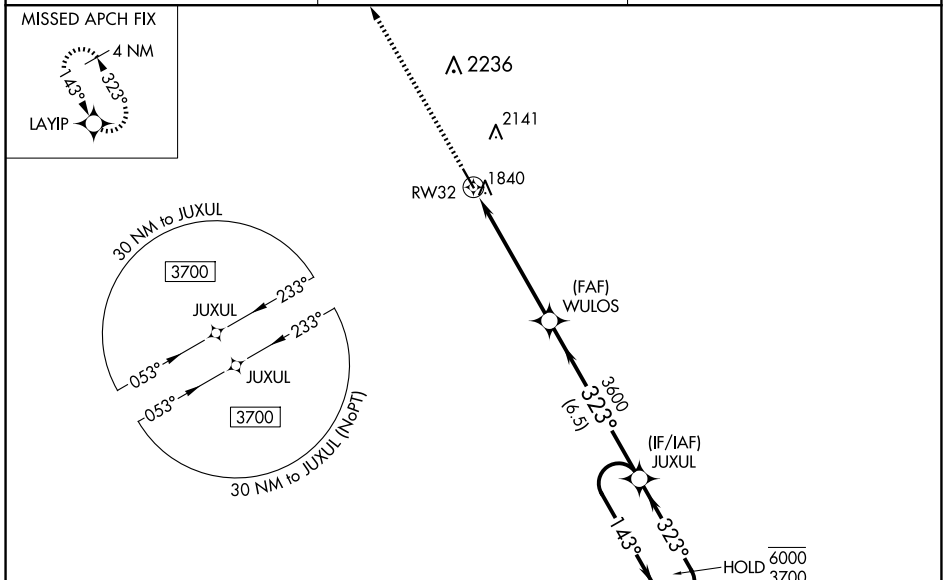
SMITH CENTER MUNI (K82)

RNP APCH - GPS.

**⚠** Baro-VNAV and VDP NA when using CNK altimeter setting. For uncompensated Baro-VNAV systems, LNAV/VNAV NA below -18°C or above 54°C. When local altimeter setting not received, use CNK altimeter setting: increase LPV DA to 2174 feet; increase LNAV/VNAV DA to 2224 feet and all visibilities ¼ SM; increase all MDAs 180 feet, and Circling all visibilities ½ SM.

MISSED APPROACH: Climb to 3900 direct LAYIP and hold.

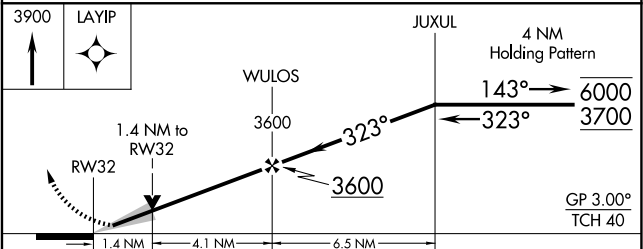
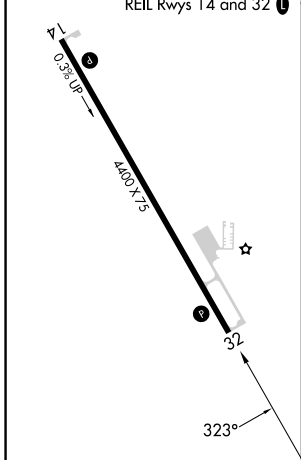
AWOS-3PT <b>118.45</b>	MINNEAPOLIS CENTER <b>119.4 278.8</b>	UNICOM <b>122.8 (CTAF) 0</b>
---------------------------	--	---------------------------------



NC-2, 16 APR 2026 to 14 MAY 2026

NC-2, 16 APR 2026 to 14 MAY 2026

ELEV 1800	TDZE 1800
MIRL Rwy 14-32	REIL Rws 14 and 32



CATEGORY	A	B	C	D
LPV DA	2000-1	200 (200-1)		NA
LNAV/VNAV DA	2050-1	250 (300-1)		NA
LNAV MDA	2300-1	500 (500-1)		NA
<b>C</b> CIRCLING	2480-1 680 (700-1)	2580-1 780 (800-1)		NA