

WAAS CH 70721 W32A	APP CRS 321°	Rwy Idg TDZE Apt Elev	4001 1233 1240
--	------------------------	-----------------------------	---

RNAV (GPS) RWY 32

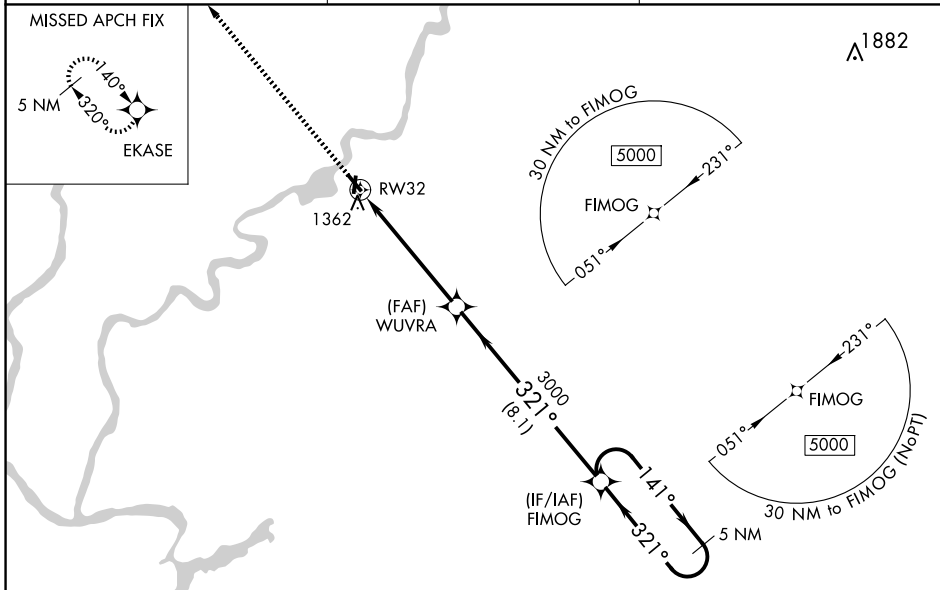
RUSK COUNTY (RCX)

RNP APCH.

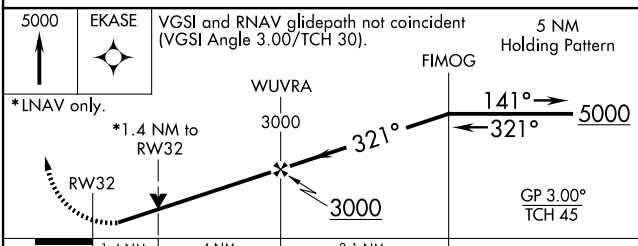
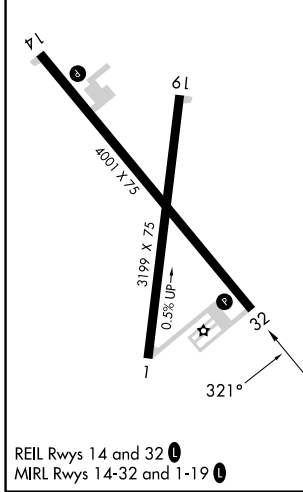
⚠ Circling to Rwy 1, 14, 19 NA at night. For uncompensated Baro-VNAV systems, LNAV/VNAV NA below -17°C or above 54°C. When local altimeter setting not received, use Rice Lake altimeter setting; increase all DAs/MDAs 100 feet. VDP and Baro-VNAV NA when using Rice Lake altimeter setting. Rwy 32 helicopter visibility below 3/4 SM NA.

MISSED APPROACH: Climb to 5000 direct EKASE and hold, continue climb-in-hold to 5000.

AWOS-3 118.125	MINNEAPOLIS CENTER 133.65 281.5	UNICOM 122.8 (CTAF)
--------------------------	---	-------------------------------



ELEV 1240	TDZE 1233
-----------	-----------



CATEGORY	A	B	C	D
LPV DA	1483-1	250 (300-1)		NA
LNAV/VNAV DA	1510-1	277 (300-1)		NA
LNAV MDA	1700-1	467 (500-1)		NA
CIRCLING	1700-1	460 (500-1)		NA

EC-3, 16 APR 2026 to 14 MAY 2026

EC-3, 16 APR 2026 to 14 MAY 2026