

WAAS CH 53719 W02A	APP CRS 022°	Rwy Ldg TDZE Apt Elev	4400 1068 1068
--	------------------------	-----------------------------	---

RNAV (GPS) RWY 2

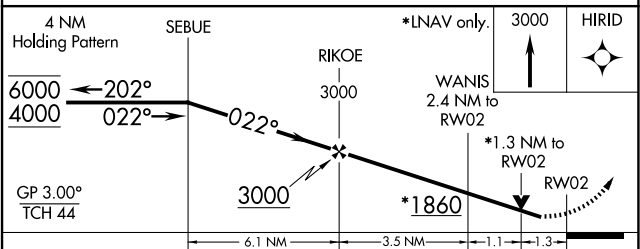
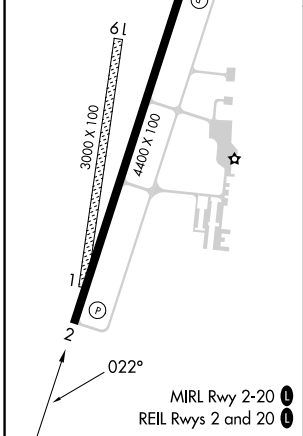
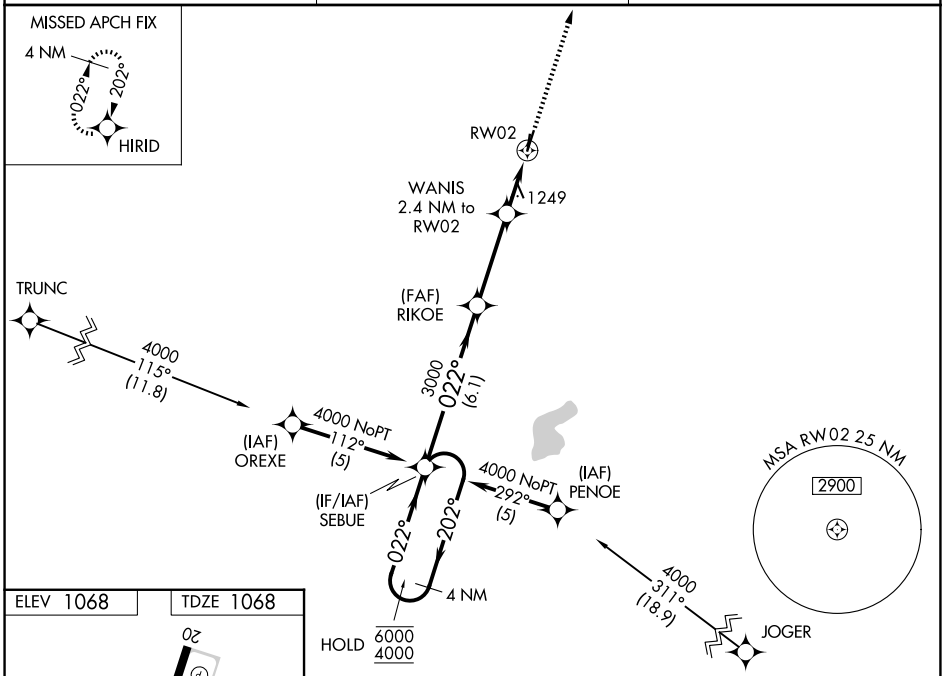
GRIMES FLD (I74)

RNP APCH.

Baro-VNAV and VDP NA when using Springfield altimeter setting. Rwy 2 helicopter visibility reduction below 3/4 SM NA. For uncompensated Baro-VNAV systems, LNAV/VNAV NA below -17°C or above 54°C. When local altimeter setting not received, use Springfield altimeter setting and increase all DAs 44 feet, all MDAs 60 feet, increase LNAV/VNAV all Cats visibility 1/4 SM, and increase Circling Cat C visibility 1/4 SM. Circling NA to Rwy 1 and 19.

MISSED APPROACH:
Climb to 3000 direct HIRID and hold.

AWOS-3 118,325	COLUMBUS APP CON 134.45 294.5	UNICOM 122.7 (CTAF) 0
--------------------------	---	---------------------------------



EC-2, 16 APR 2026 to 14 MAY 2026

EC-2, 16 APR 2026 to 14 MAY 2026