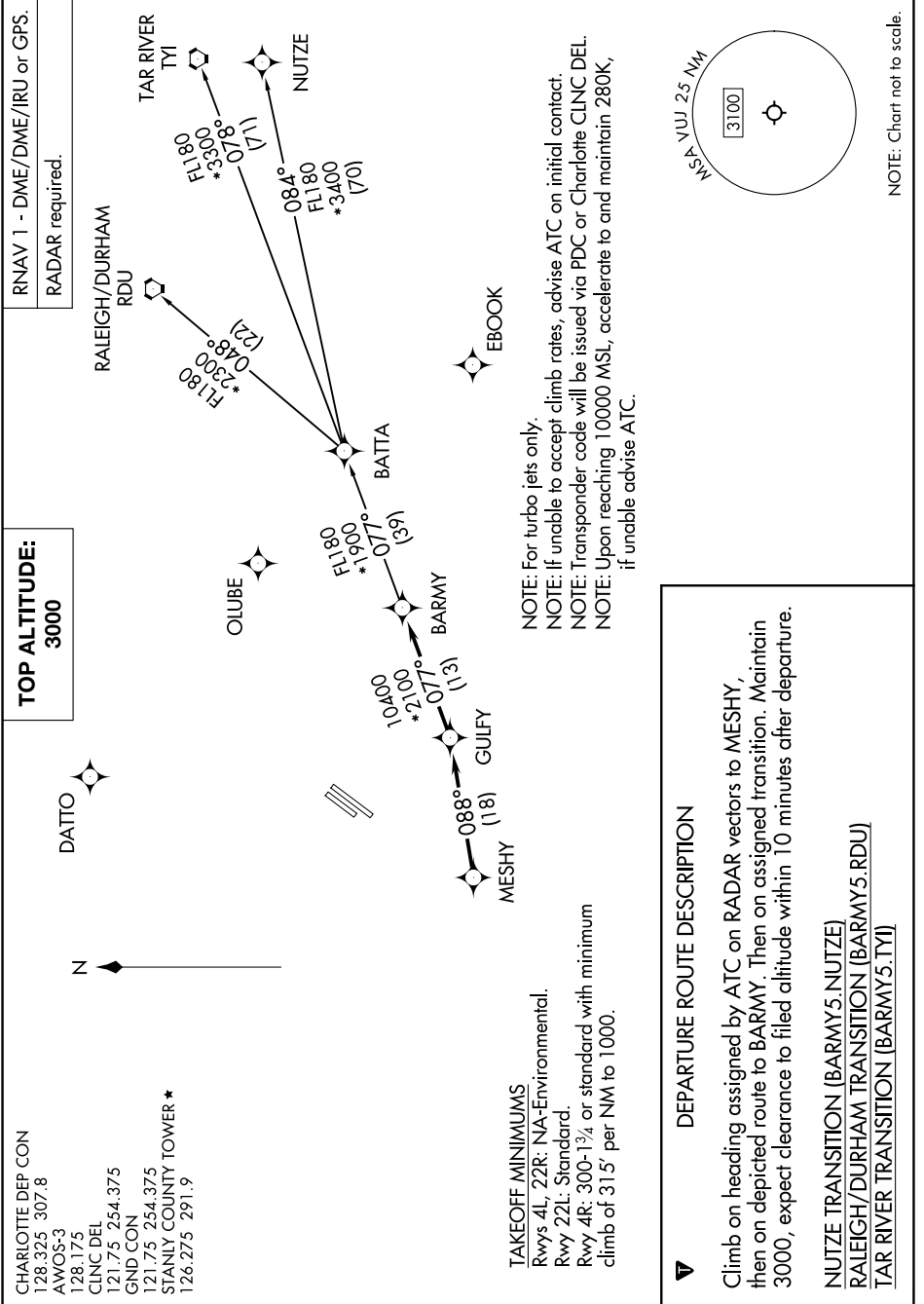


BARMY FIVE DEPARTURE (RNAV)

SE-2, 16 APR 2026 to 14 MAY 2026



CHARLOTTE DEP CON
128.325 307.8
AWOS-3
128.175
CINC DEL
121.75 254.375
GND CON
121.75 254.375
STANLY COUNTY TOWER ★
126.275 291.9

TOP ALTITUDE:
3000

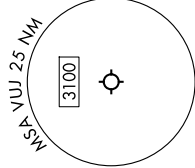
RNAV 1 - DME/DME/IRU or GPS.
RADAR required.

TAKEOFF MINIMUMS
Rwys 4L, 22R: NA-Environmental.
Rwy 22L: Standard.
Rwy 4R: 300-1 1/4 or standard with minimum
climb of 315' per NM to 1000.

▼ DEPARTURE ROUTE DESCRIPTION

Climb on heading assigned by ATC on RADAR vectors to MESHY, then on depicted route to BARMY. Then on assigned transition. Maintain 3000, expect clearance to filed altitude within 10 minutes after departure.

- NUTIZE TRANSITION (BARMY5.NUTIZE)
- RALEIGH/DURHAM TRANSITION (BARMY5.RDU)
- TAR RIVER TRANSITION (BARMY5.TYI)



NOTE: Chart not to scale.

SE-2, 16 APR 2026 to 14 MAY 2026