

LOC I-VUJ <b>110.55</b>	APP CRS <b>223°</b>	Rwy Ldg TDZE Apt Elev	<b>5499</b> <b>584</b> <b>609</b>
----------------------------	------------------------	-----------------------------	---

# ILS or LOC RWY 22L

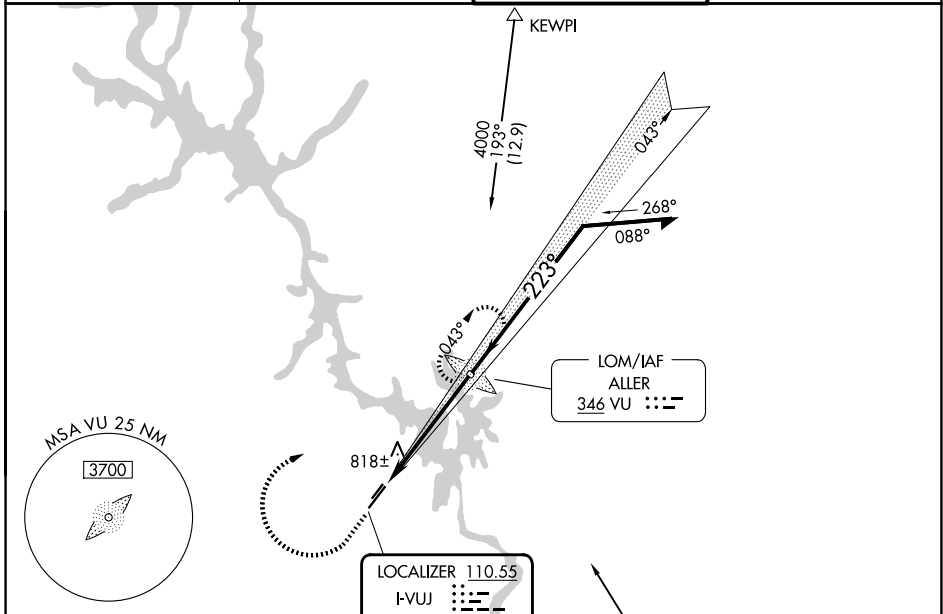
STANLY COUNTY (VUJ)

ADF required.

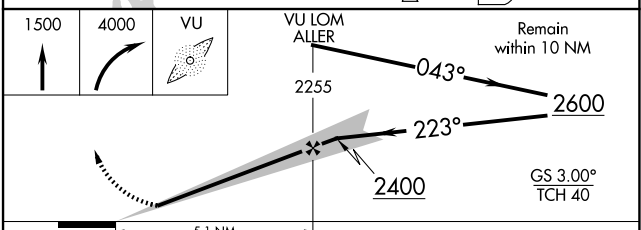
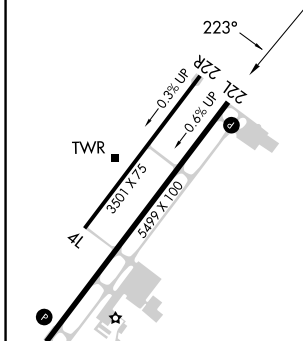
**⚠** Circling Rwy 4L, 22R NA at night.  
Rwy 22L helicopter visibility reduction below ¾ SM NA.

**MISSED APPROACH:** Climb to 1500 then climbing right turn to 4000 direct ALLER LOM and hold, continue climb-in-hold to 4000.

AWOS-3 <b>128.175</b>	CHARLOTTE APP CON <b>128.325 307.8</b>	STANLY COUNTY TOWER★ <b>126.275 (CTAF) 0 291.9</b>	GND CON <b>121.75 254.375</b>
--------------------------	---	---	----------------------------------



ELEV 609	TDZE 584
----------	----------



REIL Rwys 4R and 22L	1				
MIRL Rwys 4L-22R	1				
HIRL Rwys 4R-22L	1				
FAF to MAP 5.1 NM					
Knots	60	90	120	150	180
Min:Sec	5:06	3:24	2:33	2:02	1:42
CATEGORY	A	B	C	D	
S-ILS 22L		916-1	332 (400-1)		
S-LOC 22L	1100-1	516 (500-1)	1100-1 3/8	516 (500-1 3/8)	
CIRCLING	1260-1	651 (700-1)	1260-1 3/4	1380-2 1/2	651 (700-1 3/4) 771 (800-2 1/2)

SE-2, 16 APR 2026 to 14 MAY 2026

SE-2, 16 APR 2026 to 14 MAY 2026