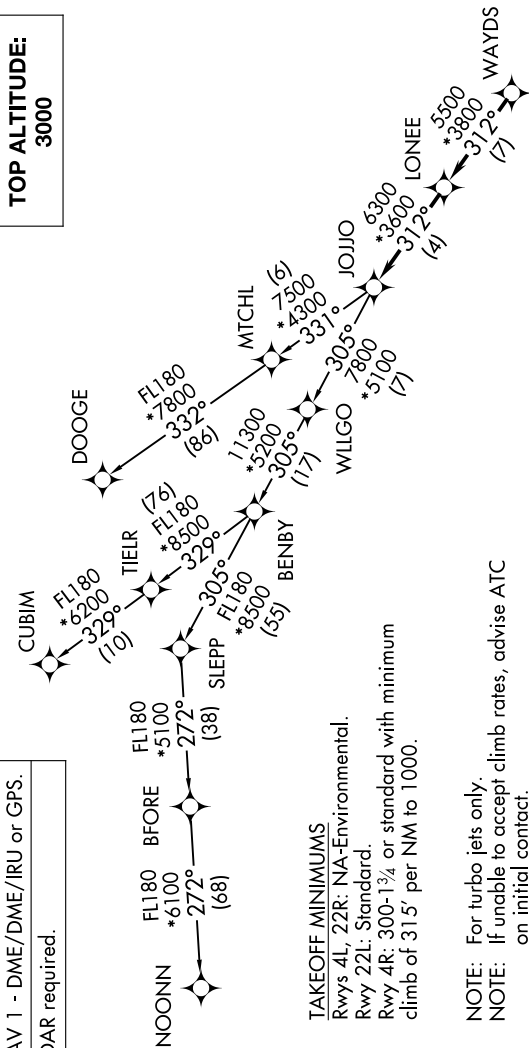


JOJO FIVE DEPARTURE (RNAV)

CHARLOTTE DEP CON
128.325 307.8
AWOS-3
128.175
CLNC DEL
121.75 254.375
GND CON
121.75 254.375
STANLY COUNTY TOWER*
126.275 (CTAF) 291.9

TOP ALTITUDE:
3000



TAKEOFF MINIMUMS

Rwys 4L, 22R: NA-Environmental.
Rwy 22L: Standard.
Rwy 4R: 300-1/4 or standard with minimum climb of 315' per NM to 1000.

NOTE: For turbo jets only.

NOTE: If unable to accept climb rates, advise ATC on initial contact.

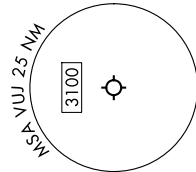
NOTE: NOONN Transition ATC assigned only.

NOTE: Upon reaching 10000 MSL, accelerate to and maintain 280K, if unable advise ATC.

DEPARTURE ROUTE DESCRIPTION

Climb on heading assigned by ATC, on RADAR vectors to WAYDS, then on depicted route to JOJO. Then on assigned transition. Maintain 3000, expect filed altitude within 10 minutes after departure.

- CUBIM TRANSITION (JOJO5.CUBIM)
- DOOGE TRANSITION (JOJO5.DOOGE)
- NOONN TRANSITION (JOJO5.NOONN)



NOTE: Chart not to scale.

JOJO FIVE DEPARTURE (RNAV)