

KERMIT FOUR DEPARTURE

CHARLOTTE DEP CON
 128.325 307.8
 AWOS-3
 128.175
 CLNC DEL
 121.75 254.375
 GND CON
 121.75 254.375
 STANLY COUNTY TOWER *
 126.275 291.9

RADAR and DME required.

**TOP ALTITUDE:
3000**

PULASKI
 116.8 PSK
 Chan 115

BARRETS MOUNTAIN
 113.75 BZM
 Chan 84(Y)

LIBERTY
 113.0 LB
 Chan 77

SUGARLOAF MOUNTAIN
 112.2 SUG
 Chan 59

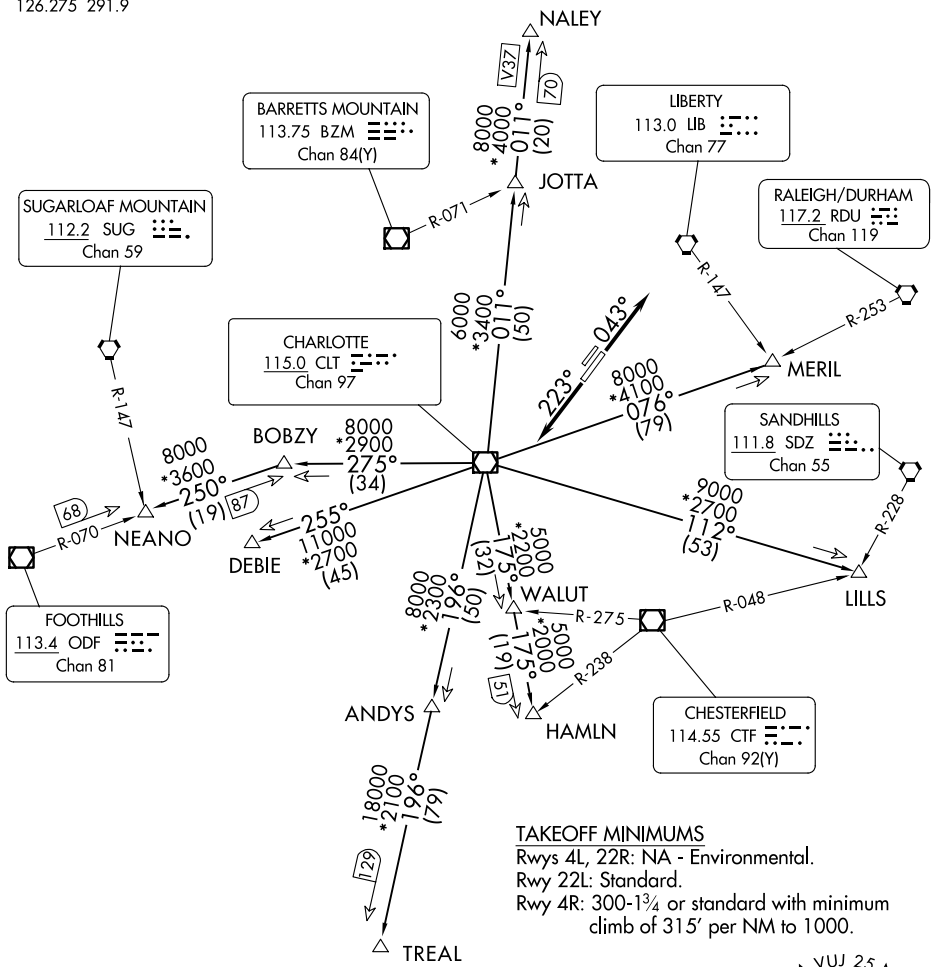
RALEIGH/DURHAM
 117.2 RDU
 Chan 119

CHARLOTTE
 115.0 CLT
 Chan 97

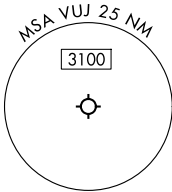
SANDHILLS
 111.8 SDZ
 Chan 55

FOOTHILLS
 113.4 ODF
 Chan 81

CHESTERFIELD
 114.55 CTF
 Chan 92(Y)



TAKEOFF MINIMUMS
 Rwy 4L, 22R: NA - Environmental.
 Rwy 22L: Standard.
 Rwy 4R: 300-1 $\frac{3}{4}$ or standard with minimum
 climb of 315' per NM to 1000.



NOTE: For turbo jet aircraft only.
 NOTE: Upon reaching 10000 MSL, accelerate to
 and maintain 280K, if unable advise ATC.
 NOTE: Transponder code will be issued via Charlotte
 clearance delivery.

NOTE: Chart not to scale.

(CONTINUED ON FOLLOWING PAGE)

SE-2, 16 APR 2026 to 14 MAY 2026

SE-2, 16 APR 2026 to 14 MAY 2026

KERMIT FOUR DEPARTURE

KERMIT FOUR DEPARTURE



DEPARTURE ROUTE DESCRIPTION

TAKEOFF RUNWAY 4R: Climb on heading 043°, thence

TAKEOFF RUNWAY 22L: Climb on heading 223°, thence

. . . . on RADAR vectors to intercept filed/assigned transition or enroute fix/navaid.
Maintain 3000, expect filed altitude/flight level 10 minutes after departure.

ANDYS TRANSITION (KER4.ANDYS): From over CLT VOR/DME on CLT R-196 to ANDYS.

DEBIE TRANSITION (KER4.DEBIE): From over CLT VOR/DME on CLT R-255 to DEBIE.

HAMLN TRANSITION (KER4.HAMLN): From over CLT VOR/DME on CLT R-175 to HAMLN.

JOTTA TRANSITION (KER4.JOTTA): From over CLT VOR/DME on CLT R-011 to JOTTA.

LILLS TRANSITION (KER4.LILLS): From over CLT VOR/DME on CLT R-112 to LILLS.

MERIL TRANSITION (KER4.MERIL): From over CLT VOR/DME on CLT R-076 to MERIL.

NALEY TRANSITION (KER4.NALEY): From over CLT VOR/DME on CLT R-011 to NALEY.

NEANO TRANSITION (KER4.NEANO): From over CLT VOR/DME on CLT R-275 to BOBZY,
then on ODF R-070 to NEANO.

TREAL TRANSITION (KER4.TREAL): From over CLT VOR/DME on CLT R-196 to TREAL.

SE-2, 16 APR 2026 to 14 MAY 2026

SE-2, 16 APR 2026 to 14 MAY 2026