

KILNS FIVE DEPARTURE (RNAV)

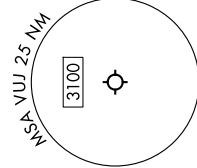
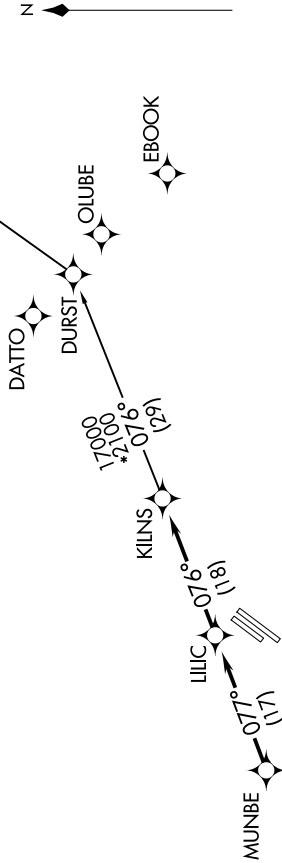
SE-2, 16 APR 2026 to 14 MAY 2026

CHARLOTTE DEP CON
128.325 307.8
AWOS-3
128.175
CLNC DEL
121.75 254.375
GND CON
121.75 254.375
STANLY COUNTY TOWER*
126.275 (CTAF) 291.9

RNAV 1 - DME/DME/IRU or GPS.
RADAR required.

**TOP ALTITUDE:
3000**

- NOTE: For turbojets only.
- NOTE: Transponder code will be issued via PDC or Charlotte CLNC DEL.
- NOTE: Upon reaching 10000 MSL, accelerate to and maintain 280K, if unable advise ATC.
- NOTE: If unable to accept climb rates, advise ATC on initial contact.



TAKEOFF MINIMUMS
 Rwy 4L, 22R: NA - environmental.
 Rwy 22L: Standard.
 Rwy 4R: 300-1/4 or Standard with minimum climb of 315' per NM to 1000.

DEPARTURE ROUTE DESCRIPTION
 Climb on heading assigned by ATC, on RADAR vectors to MUNBE, then on depicted route to KILNS, then on AUDII Transition. Maintain 3000. Expect clearance to filed altitude within 10 minutes after departure.

AUDII TRANSITION (KILNS5.AUDII)

NOTE: Chart not to scale.

KILNS FIVE DEPARTURE (RNAV)

SE-2, 16 APR 2026 to 14 MAY 2026