

WAAS CH 69245 W19A	APP CRS 190°	Rwy Ldg 5406 TDZE 909 Apt Elev 909
--	------------------------	---

RNAV (GPS) RWY 19

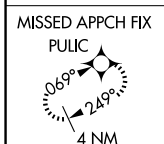
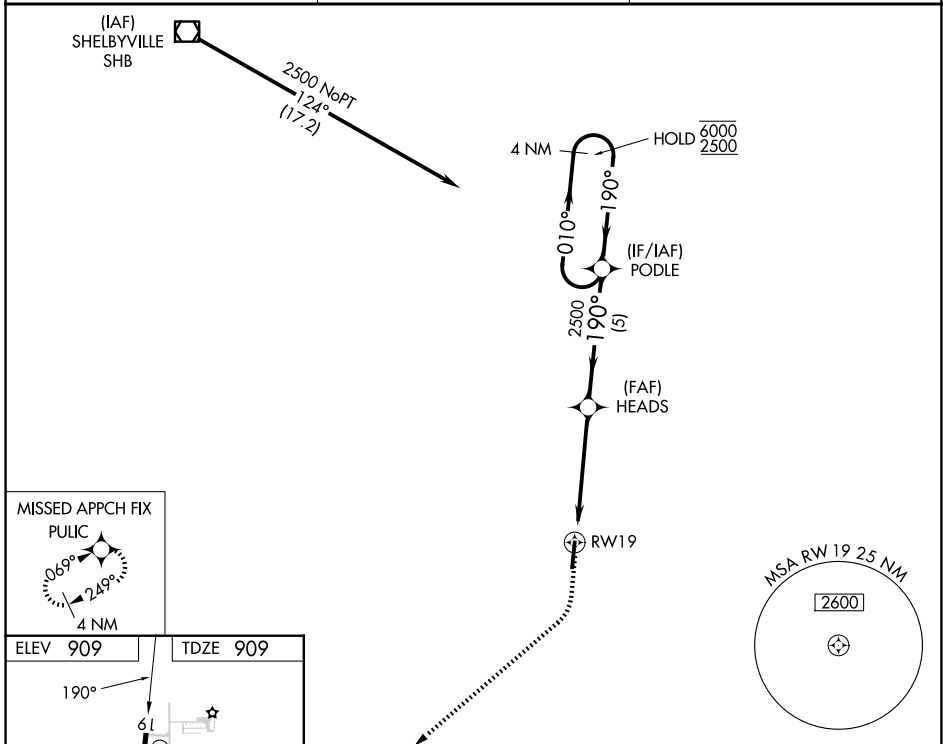
GREENSBURG MUNI (I34)

RNP APCH - GPS.

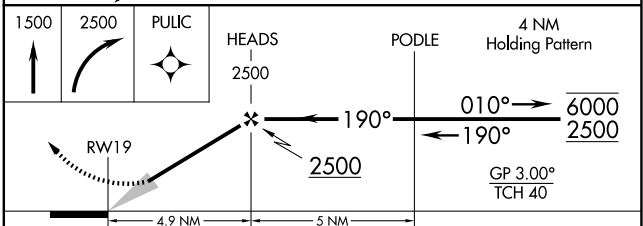
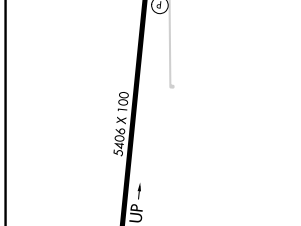
Baro-VNAV NA. Use Columbus Muni altimeter setting, when not received, use Indianapolis
Int'l altimeter setting: increase LPV DA to 1327 feet and all visibilities $\frac{1}{8}$ SM; increase
LNAV/VNAV DA to 1419 feet; increase all MDAs 40 feet and Circling visibility Cat C $\frac{1}{4}$ SM.

MISSED APPROACH:
 Climb to 1500 then
 climbing right turn to 2500
 direct PULIC and hold.

BAK AWOS-3 119.75	INDIANAPOLIS APP CON 127.15	CTAF 122.9
-----------------------------	---------------------------------------	----------------------



ELEV 909	TDZE 909
----------	----------



CATEGORY	A	B	C	D
LPV DA	1288-1	379 (400-1)		NA
LNAV/VNAV DA	1380-1 $\frac{3}{8}$	471 (500-1 $\frac{3}{8}$)		NA
LNAV MDA	1500-1	591 (600-1)	1500-1 $\frac{3}{4}$ 591 (600-1 $\frac{3}{4}$)	NA
CIRCLING	1540-1 631 (700-1)	1640-1 731 (800-1)	1640-2 731 (800-2)	NA

MIRL Rwy 1-19
 REIL Rws 1 and 19

EC-2, 16 APR 2026 to 14 MAY 2026

EC-2, 16 APR 2026 to 14 MAY 2026