

| | | |
|--|------------------------|--|
| WAAS CH 63040 W27A | APP CRS 275° | Rwy Ldg TDZE Apt Elev 5540 7415 7415 |
|--|------------------------|--|

RNAV (GPS) RWY 27

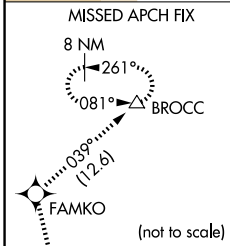
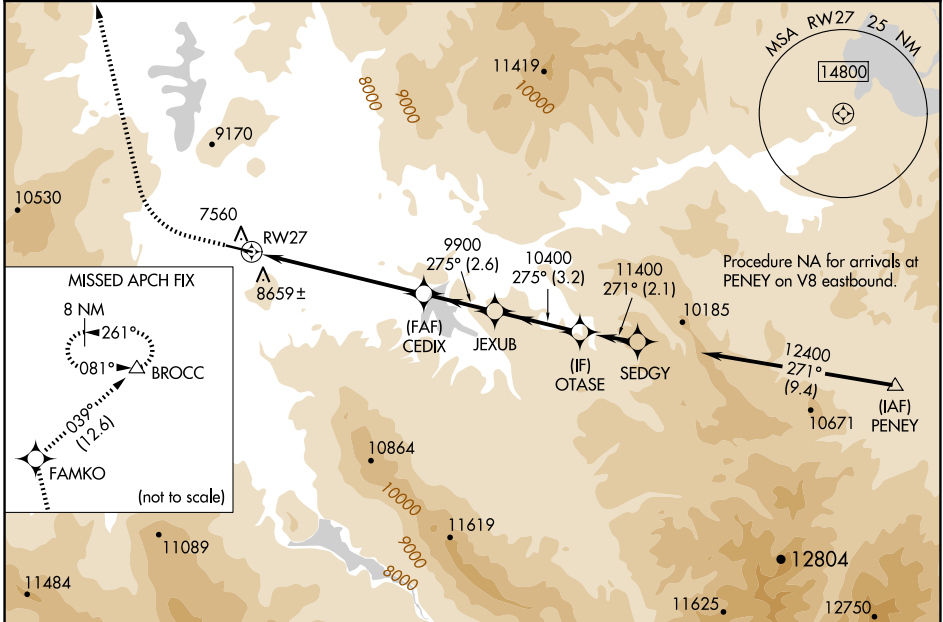
MC ELROY AIRFIELD (20V)

RNP APCH

⚠ Circling to Rwy 9 NA at night. Circling NA south of Rwy 9-27.
⚠ Rwy 27 helicopter visibility reduction below 3/4 SM NA.
⚠ For uncompensated Baro-VNAV systems, LNAV/VNAV NA below -29°C or above 48°C.

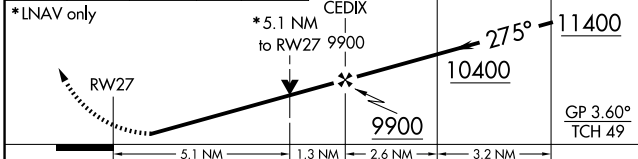
MISSED APPROACH: Climb to 9300 then climbing right turn to 13400 direct FAMKO and on track 039° to BROCC and hold. # Missed approach requires minimum climb of 405 feet per NM to 10000.

| | | |
|--------------------------|--------------------------------------|-------------------------------|
| AWOS-3 118.425 | DENVER CENTER 128.65 282.2 | UNICOM 122.8 (CTAF) |
|--------------------------|--------------------------------------|-------------------------------|

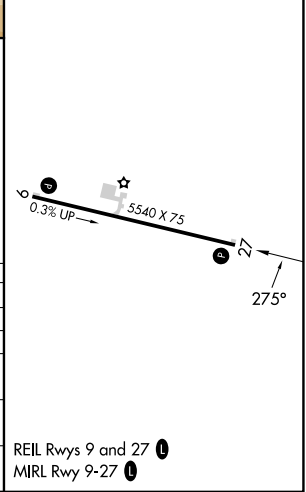


| | | | |
|------|------|------|------|
| ELEV | 7415 | TDZE | 7415 |
|------|------|------|------|

9300 13400 FAMKO tr 039° BROCC
 VGSI and RNAV glidepath not coincident (VGSI Angle 3.00/TCH 44).
 JEXUB OTASE



| CATEGORY | A | B | C | D |
|-------------------|---------------------------------|---------------------------------|-------------------------|----|
| LPV DA # | 8245-2 1/2 | 830 (900-2 1/2) | | NA |
| LPV DA | 9021-6 | 1606 (1700-6) | | NA |
| LNAV/VNAV DA | 8819-5 | 1404 (1500-5) | | NA |
| LNAV MDA | 9100-1 1/4 1685 (1700-1 1/4) | 9100-1 1/2 1685 (1700-1 1/2) | 9100-3 1685 (1700-3) | NA |
| C CIRCLING | 9100-1 1/4 1685 (1700-1 1/4) | 9100-1 1/2 1685 (1700-1 1/2) | 9220-3 1805 (1900-3) | NA |



SW-1, 16 APR 2026 to 14 MAY 2026

SW-1, 16 APR 2026 to 14 MAY 2026