

WAAS CH <b>86739</b> <b>W08A</b>	APP CRS <b>082°</b>	Rwy Ldg <b>4007</b> TDZE <b>585</b> Apt Elev <b>585</b>
--	------------------------	---

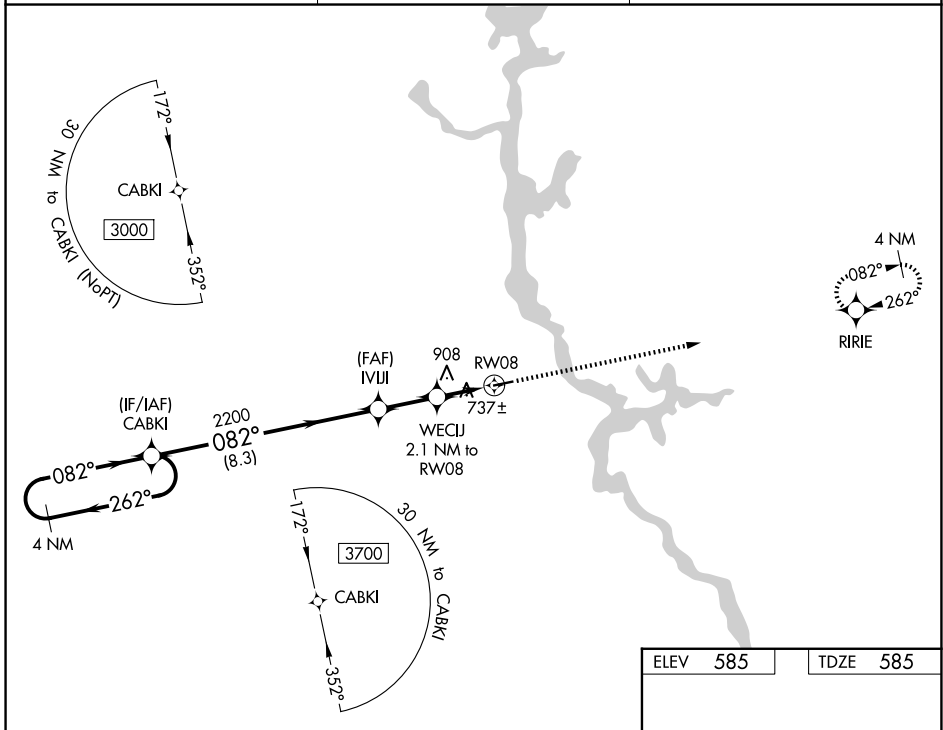
# RNAV (GPS) RWY 8

CHILTON COUNTY (02A)

**NA** DME/DME RNP-0.3 NA. Helicopter visibility reduction below 1 SM NA. Use Shelby County altimeter setting; when not received, use Merkel Field Sylacauga Muni altimeter setting and increase all MDA 20 feet and LNAV visibility Cat C/D ½ mile. Procedure NA at night.

MISSED APPROACH: Climb to 3300 direct RIRIE and hold.

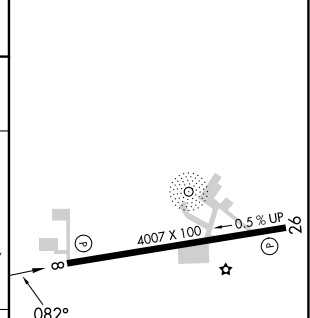
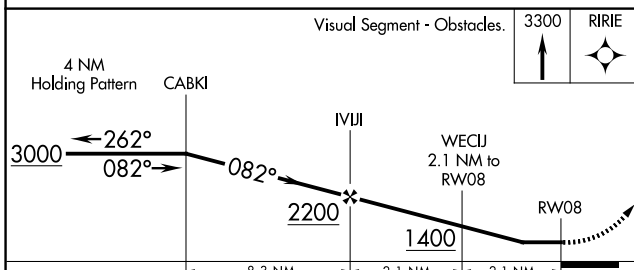
EET ASOS-3 <b>134.325</b>	MONTGOMERY APP CON ★ <b>121.2 269.05</b>	UNICOM <b>122.8 (CTAF) 0</b>
------------------------------	---	---------------------------------



SE-4, 16 APR 2026 to 14 MAY 2026

SE-4, 16 APR 2026 to 14 MAY 2026

ELEV <b>585</b>	TDZE <b>585</b>
-----------------	-----------------



CATEGORY	A	B	C	D
LP MDA	1040-1	455 (500-1)	1040-1 $\frac{3}{8}$	455 (500-1 $\frac{1}{2}$ )
LNAV MDA	1220-1	635 (700-1)	1220-1 $\frac{3}{4}$	635 (700-1 $\frac{3}{4}$ )
CIRCLING	1260-1	675 (700-1)	1280-2 695 (700-2)	1600-3 1015 (1100-3)

MIRL Rwy 8-26 0  
REIL Rws 8 and 26