

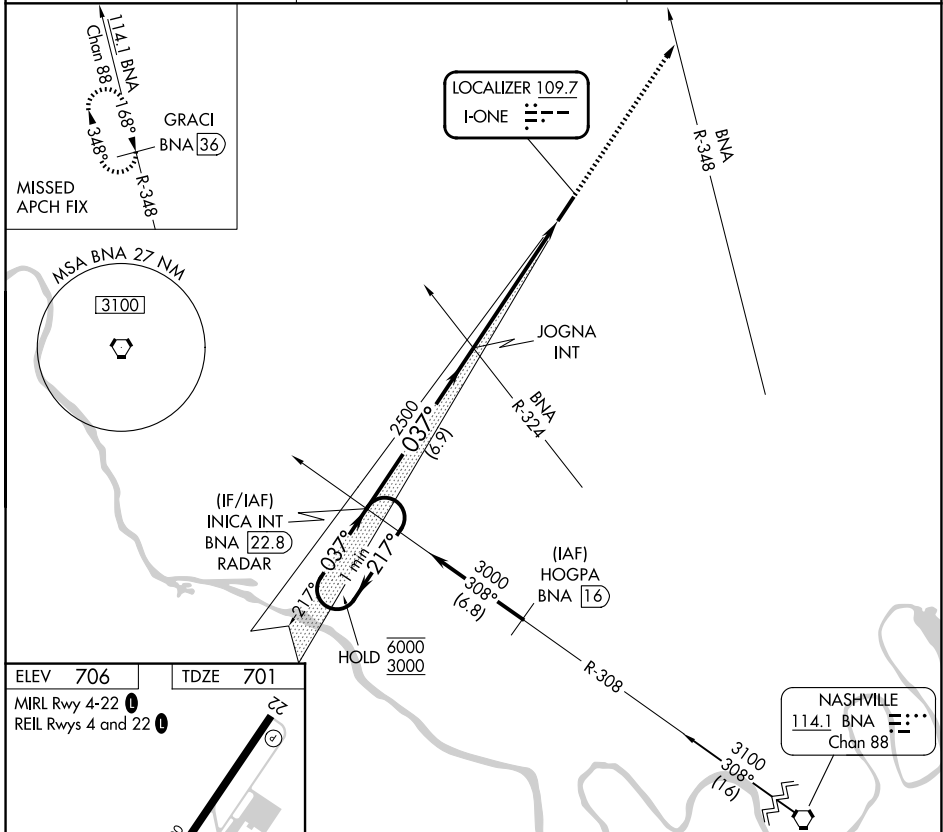
# LOC RWY 4

SPRINGFIELD ROBERTSON COUNTY (M91)

LOC I-ONE <b>109.7</b>	APP CRS <b>037°</b>	Rwy Ldg <b>5505</b> TDZE <b>701</b> Apt Elev <b>706</b>
---------------------------	------------------------	---

**NA** Rwy 4 helicopter visibility reduction below 3/4 SM NA. MISSED APPROACH: Climb to 3100 on heading 037° and BNA VORTAC R-348, to GRACI/BNA 36 DME and hold.

AWOS-3 <b>120.675</b>	NASHVILLE APP CON <b>119.35 372.0</b>	UNICOM <b>123.0 (CTAF) 0</b>
--------------------------	--	---------------------------------



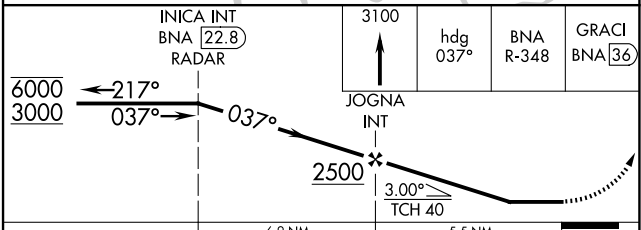
ELEV 706 TDZE 701

MIRL Rwy 4-22 (1)  
REIL Rws 4 and 22 (1)

5505 x 100

Knots	60	90	120	150	180
Min:Sec	5:30	3:40	2:45	2:12	1:50

FAF to MAP 5.5 NM



CATEGORY	A	B	C	D
S-4	1180-1 479 (500-1)		1180-1 <sup>3</sup> / <sub>4</sub> 479 (500-1 <sup>3</sup> / <sub>4</sub> )	
CIRCLING	1180-1 474 (500-1)		1360-1 <sup>3</sup> / <sub>4</sub> 654 (700-1 <sup>3</sup> / <sub>4</sub> )	1540-2 <sup>3</sup> / <sub>4</sub> 834 (900-2 <sup>3</sup> / <sub>4</sub> )

# LOC RWY 4

SE-1, 16 APR 2026 to 14 MAY 2026

SE-1, 16 APR 2026 to 14 MAY 2026